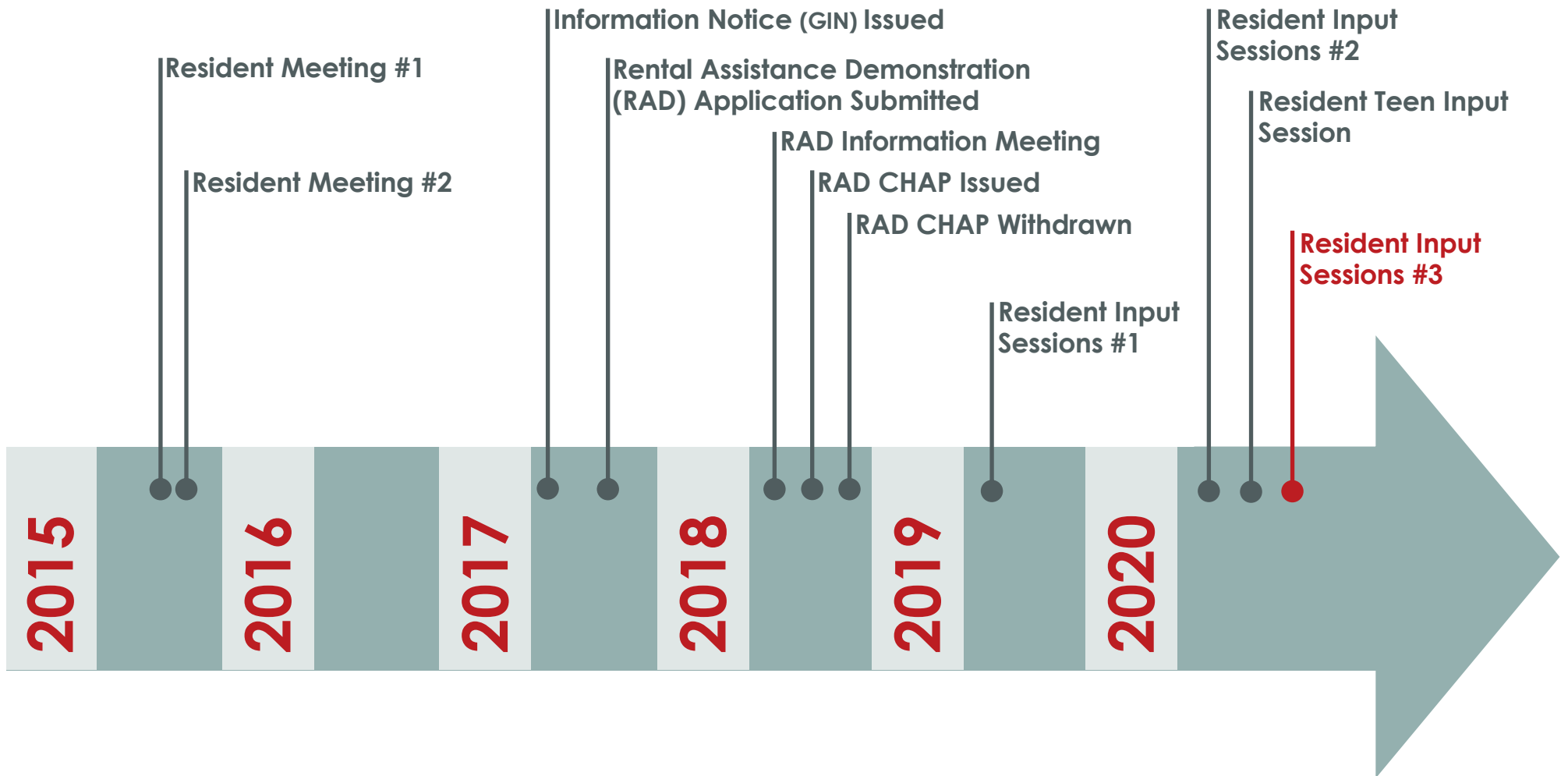
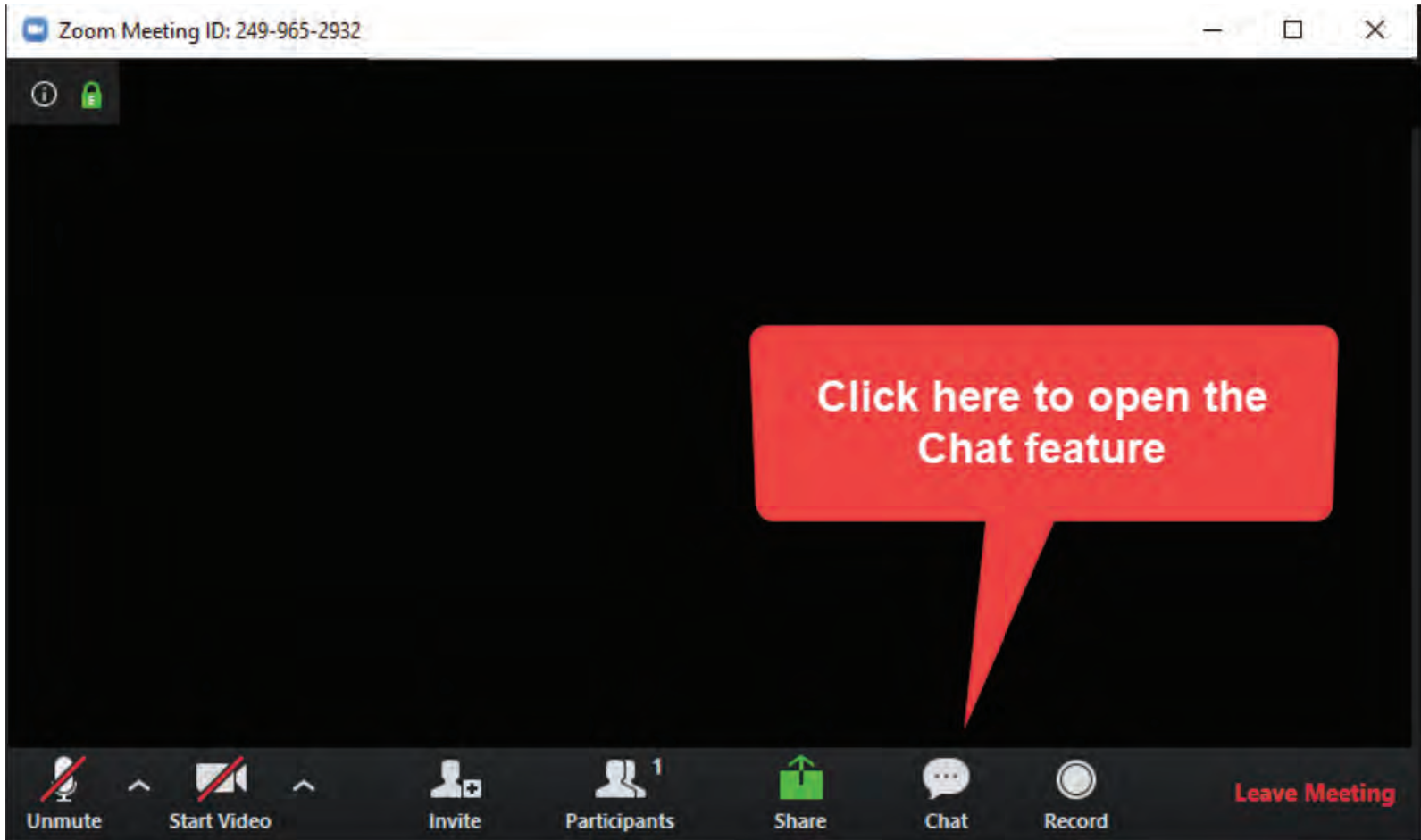




HILLSIDE TERRACE









6th Street and 6th and Helena need
Bus Shelters also on the other side
going North

Large play area for children,
Tracks for skating or biking
Lots of grass and trees.

Community Gatherings for possibly
bingo, pot readings, and
small parties or to present
awards, boost morale.
computer training, arts and
crafts.

• Speed bumps, or to and or traffic
calming tools.

A Quiet Space - Restroom,
* We need our ^{gathering} area cleaned / free
of moist and mildewed
benches

Pavilion is nice
Umbrellas for sun

• Additional stop light near Hillside
Bus Stop (for safety)

• 6th St. Hill hides view of cars
6th Helena and Bus Stop (unsafe)

we could use an area for exercise

Loved the playgrounds
Tot lot + event for
big kids

- Fenced in basketball court monitored
for Hillside only
- Volleyball court
- Tennis court

- A place to gather
and socialize privately
- We need more softer seats in
the highrise
lobby

Basketball court
No public park => private
walking trails

LOBBY - people gather.

ART IS IMPORTANT

- We would like to have space
either in the Hillside tower
Cater food for our holidays

Great Idea # Gardens
Roof top + Ground Gardens

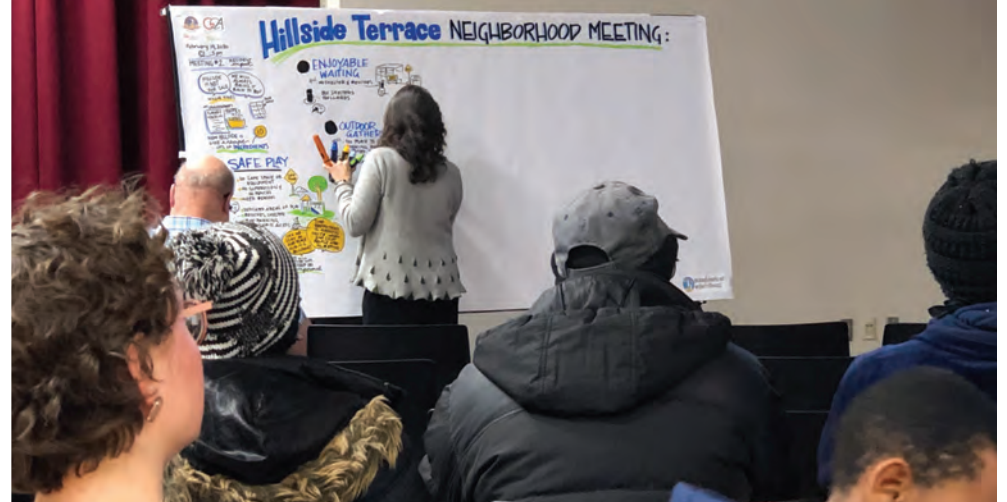
SR. Citizen AREA.

So they come out
of their house

- Playgrounds for the kids
- Structured public play for kids
• areas for sports
- basketball
- soccer

TRAFFIC IS FIRST
ROADS ARE NARROW

BIKE HUB IS GREAT FOR DAILY USE, HOWEVER
SEATERS ARE A NUISANCE AND WHEN OUT OF
POWER ARE LEFT ON WALK WAY.





February 19, 2020
@ 5 PM

MEETING #2: RESIDENT INPUT

Hillside Terrace NEIGHBORHOOD MEETING:

HILLSIDE IS NOT FOR SALE
WE WILL ALWAYS BRING IT BACK TO YOU!
WILLIE HINES

MY GRANDFATHER'S TURKEY RECIPE
YOUR INPUT

NEW HILLSIDE IS LIKE A RECIPE
... LOTS OF INGREDIENTS

1 SAFE PLAY

- NO SAFE SPACE OR EQUIPMENT
- NO SUPERVISION & NO FENCES
- NEED BENCHES
- DEDICATED AREAS OF PLAY
- BENCHES, SHELTER
- BIKE PARKING
- WHEELCHAIR ACCESS
- WILL IT BE DRUG-FREE?
- SAFETY FIRST
- WHAT ABOUT HIGH RISE?
- WILL BE ADDRESSED
- TIME RESTRICTIONS TO ADDRESS NOISE WHEN 2ND SHIFT PEOPLE ARE SLEEPING
- CAN WE STAY IN OUR PLACE DURING A BUILDING?
- WE WILL COVER COSTS & KEEP YOU INFORMED

2 ENJOYABLE WAITING

- NO SHELTER & BENCHES
- BUS SHELTERS
- BOLLARDS

3 OUTDOOR GATHERING

- NO PLACE TO GATHER
- COOKING PREPARATION
- LIMITED SEATING
- CREATE PARKS
- SHELTER
- LIGHTING
- FLEXIBLE LAWN SEATING
- CAN YOU BEING OWN GRILL?
- YES!
- ONLY ONE AREA?
- NO... SPREAD OUT
- SEVERAL areas, BUT WALKABLE
- 4 UNITS?
- DON'T KNOW YET.
- SHELTER FROM WIND

4 ROOFTOP SPACES

- NO PLACE TO BE ALONE
- HARD TO SEE CITY VIEWS
- "OUTSIDERS" DON'T RESPECT neighborhood

5 OUTDOOR SPORTS

- FOR OUR YOUTH
- ENCLOSED SPACE WITH ACCESS
- WHAT ABOUT WINTER?
- BOYS & GIRLS CLUBS

6 WALKING PATHS

- CAR FOCUSED - MAKE PATHS!
- TRASH FALLS OVER
- CRITTERS COME
- SAFETY
- DESIGNATED SHORTCUTS
- DESTINATIONS TO WALK TO
- LIGHTING
- BUMPOUT FOR SAFE CROSSWALK

7 SAFE CROSSING

- 6TH STREET MOVES QUICKLY!
- ACCESSIBLE FOR WHEELCHAIRS
- CURB CUTS IN BOTH DIRECTIONS
- NARROW 6TH STREET TO S.L.O.W down
- SPEED BUMPS WITHIN DEVELOPMENT
- TRAFFIC LIGHTS?
- BOLLARDS

8 PROTECTED TRASH

- OVER-RUN BY CRITTERS
- TIPPED OVER
- MOVE TRASH INSIDE
- CAN THEY BE ACCESSIBLE FOR CHILDREN TO REACH?

9 BUILDING ENTRY

- SHARED/INDIVIDUAL ENTRANCE
- SAFETY OF PACKAGES
- SHOVELING?
- SECURITY
- LAYERED SECURITY
- LOCKERS TO KEEP PACKAGES SAFE
- SPACE TO VISIT
- MY UNIT DOOR IS LOOSE
- COVERS
- SHOVEL
- SWIPE ELECTRIC KEY
- 2ND SET OF DOORS
- WHAT ABOUT GOING TO MY OWN DOOR?
- THERE WILL BE BOTH

10 INDOOR GATHERING

- MORE KITCHEN AREA
- FLEXIBLE SPACE FOR HOLIDAYS
- FORMAL BIGGER GATHERING NEAR OUTSIDE
- ABILITY TO COOK
- WORKOUT AREA?
- FLEXIBLE SPACES FOR PROGRAMMING
- SMALLER LISTENING SESSIONS
- WE WILL DO OUR BEST TO INTEGRATE
- COME & PARTICIPATE!





HILLSIDE WORKS

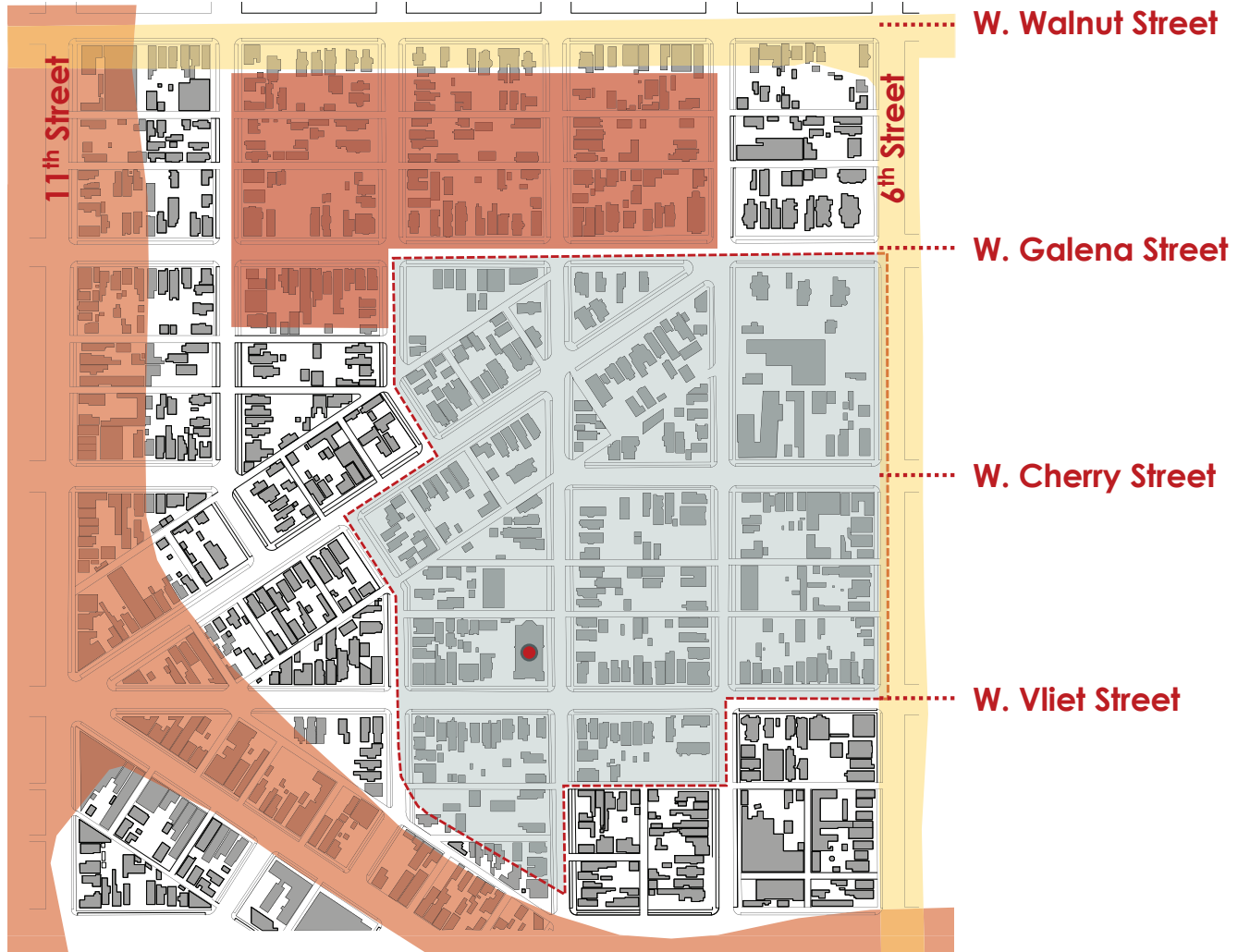
JOB-PROGRAM

CHECK IT OUT

meaningfulmarks.net
@sherrillknezcl

HILLSIDE NEIGHBORHOOD 1948-1965

-  HILLSIDE
-  6th & Walnut
-  RACM Development
-  INTERSTATE 43





ATHENA COMMUNICATIONS ■ CE PLANNING STUDIO ■ HOUSING AUTHORITY OF THE CITY OF MILWAUKEE ■ GALBRAITH CARNAHAN ARCHITECTS

“I would walk around Hillside, but there’s no where to walk to.”

Hillside Resident - 12.04.19

“I don’t go anywhere in Hillside because it all looks the same.”

Hillside Teen – 08.18.20

- 2,389 UNITS
- 343 PRIVATE ENTRANCES
- 1,930 COVERED PARKING SPACES
- 20+ PUBLIC SPACES



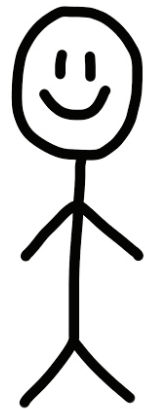
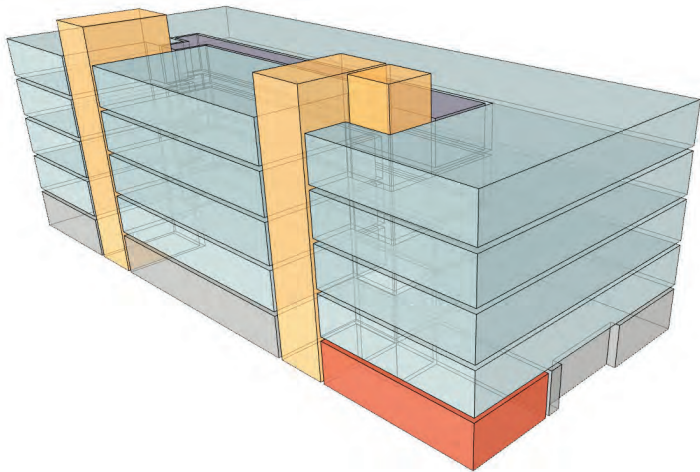
..... W. Galena Street

..... W. Cherry Street

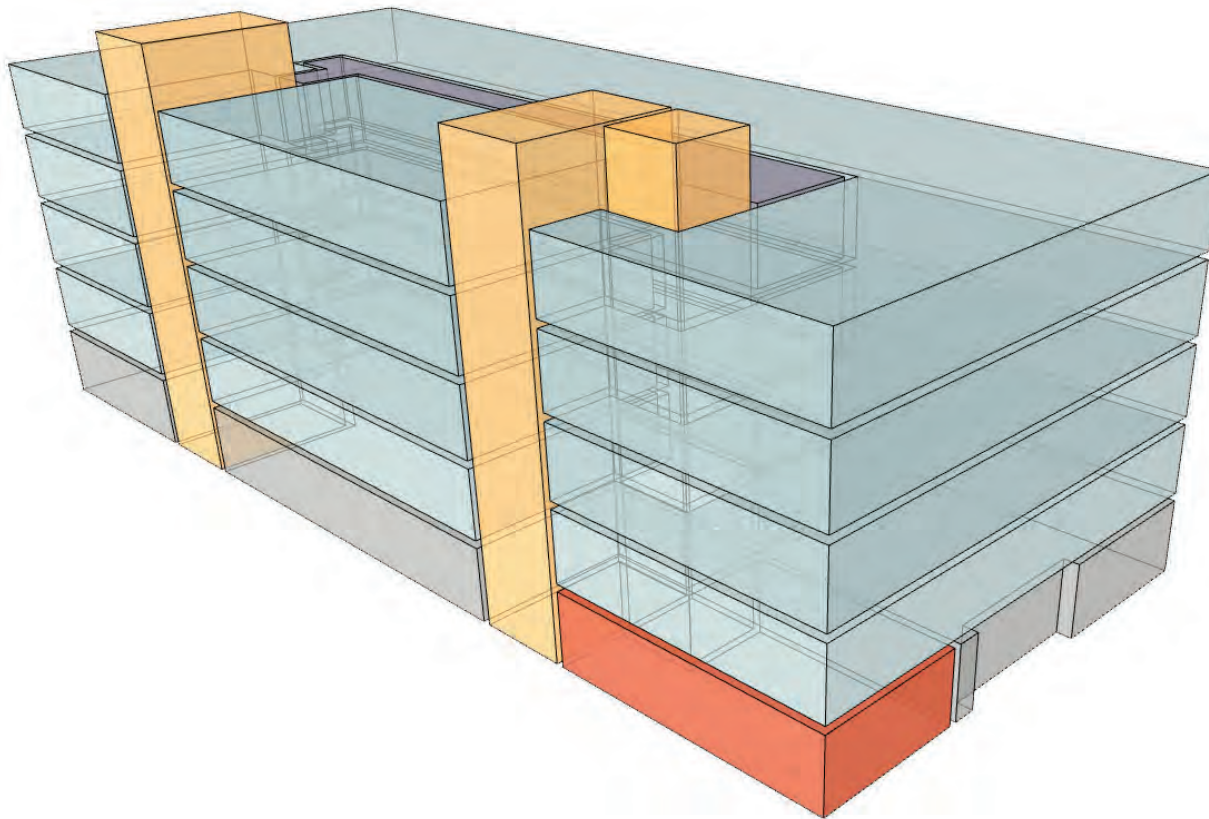
..... W. Vliet Street

..... W. McKinley Ave.





TYPICAL BUILDING DIAGRAM



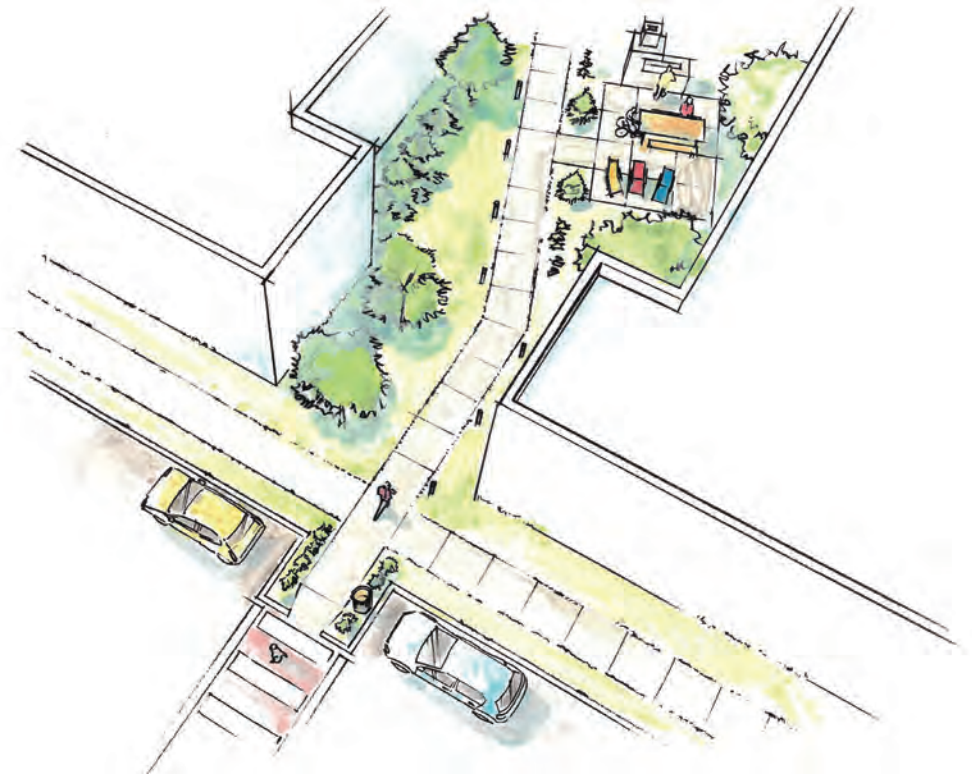
-  PARKING
-  PUBLIC SPACE
-  RESIDENCES
-  STAIRS & ELEVATORS
-  HALLWAYS

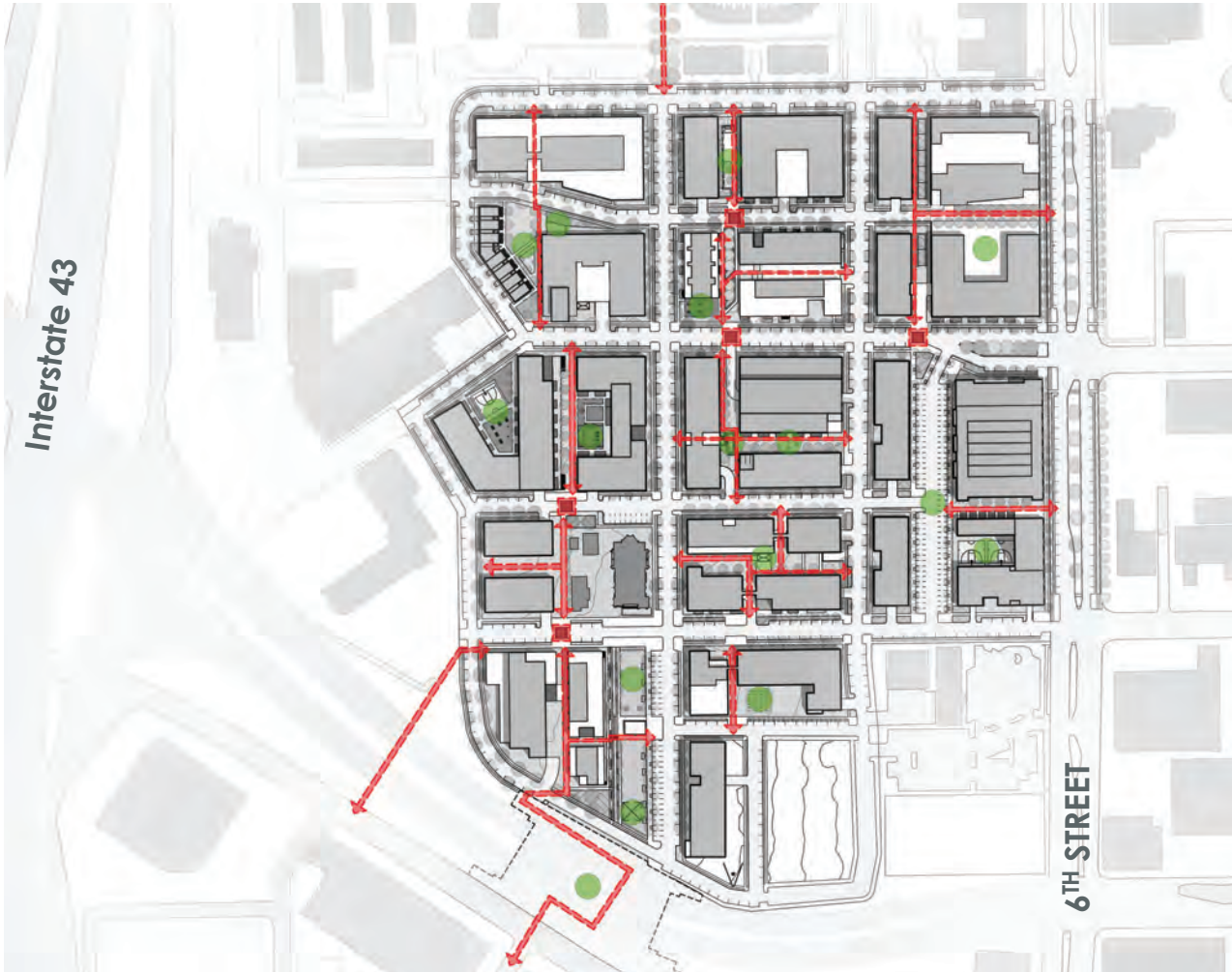


ATHENA COMMUNICATIONS ■ CE PLANNING STUDIO ■ HOUSING AUTHORITY OF THE CITY OF MILWAUKEE ■ GALBRAITH CARNAHAN ARCHITECTS

WALKING PATHS

- Designated “Shortcuts” through neighborhood.
- Safety at Pedestrian / Car crossings.
- Safety lighting throughout Hillside.
- Remove disability barriers on paths.
- Walking paths connect destinations.





..... W. Galena Street

..... W. Cherry Street

..... W. Vliet Street

..... W. McKinley Ave.

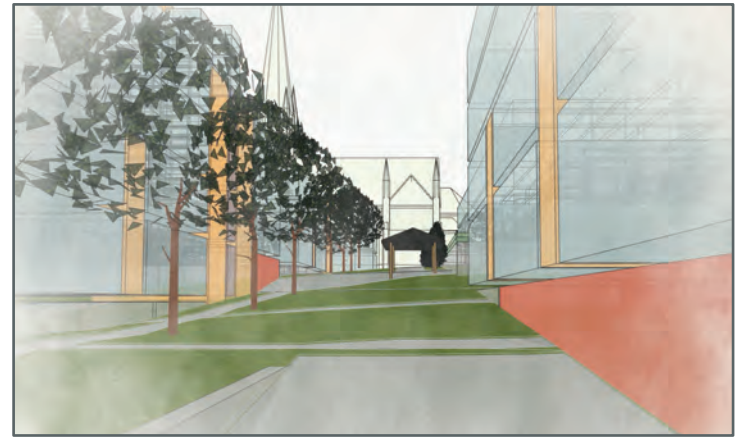
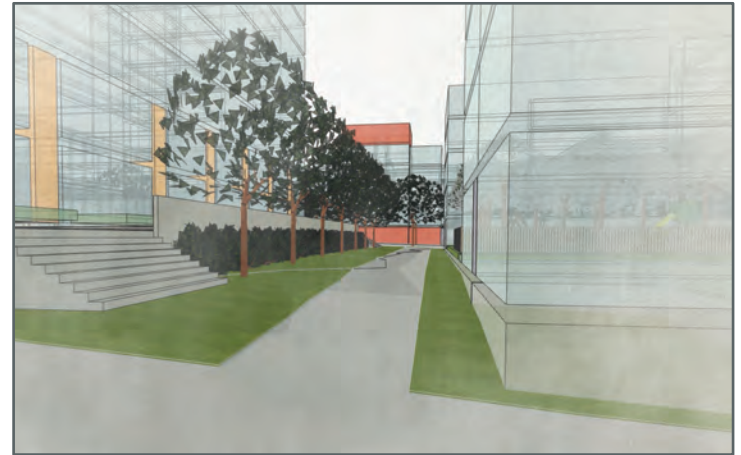
Interstate 43

6TH STREET

KEY

- WALKING PATHS
- OUTDOOR ACTIVITY





OUTDOOR GATHERING

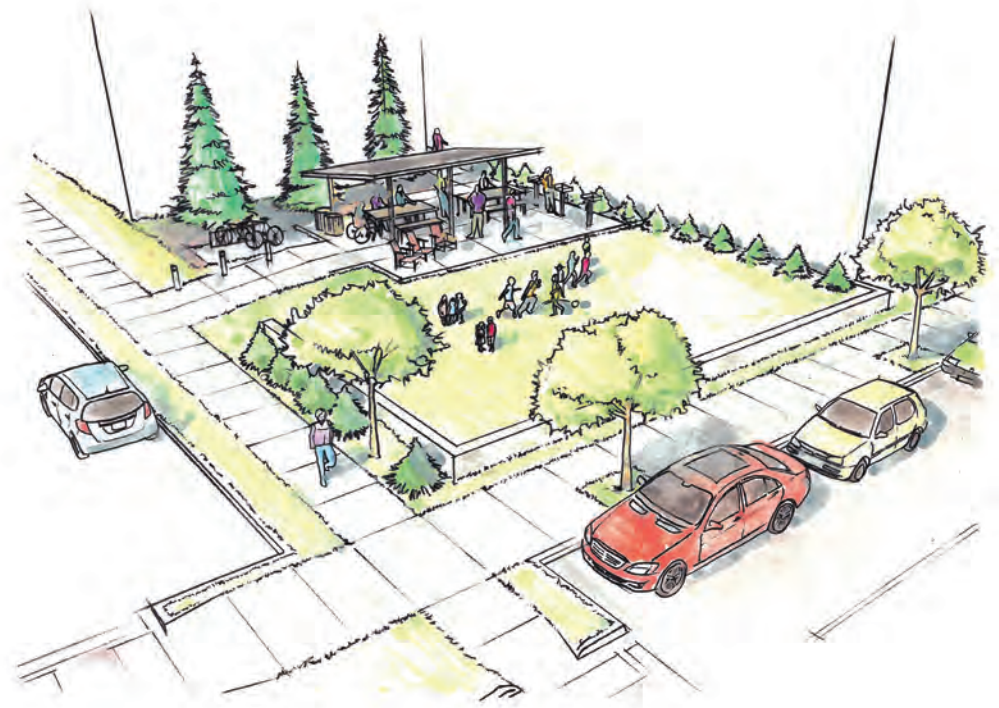
- Dedicated space to gather outside.
- Shared grills allow for hot food.
- Seating placed at activity hubs.
- Provide shelter from sun & rain.
- Locate spaces along visible routes to discourage unwanted activity.



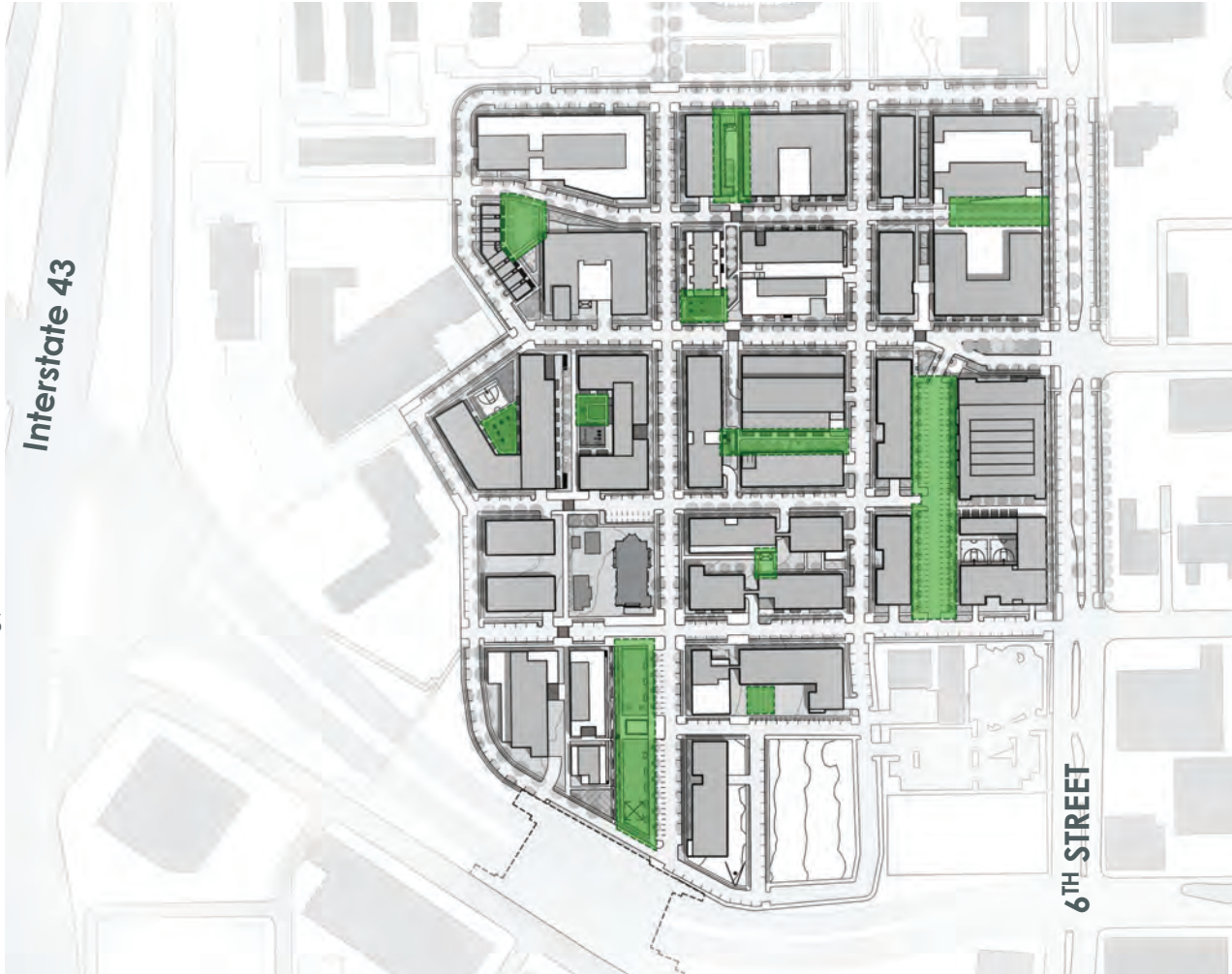
MILWAUKEE WISCONSIN



THE ROSE - MINNEAPOLIS MINNESOTA



KEY
■ OUTDOOR
GATHERING SPACES

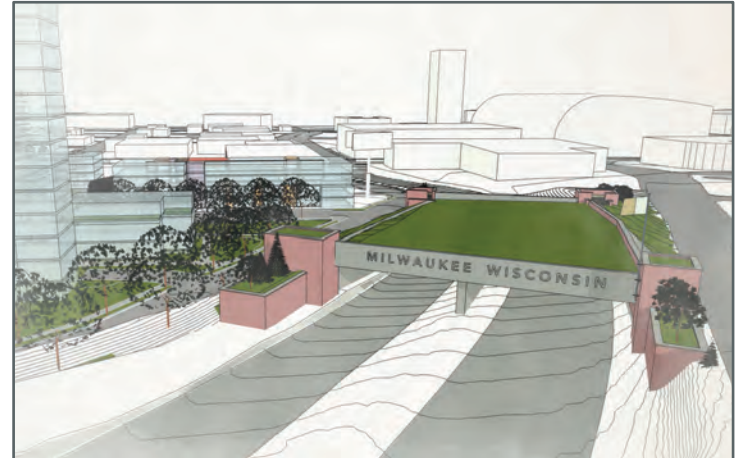


..... W. Galena Street

..... W. Cherry Street

..... W. Vliet Street

..... W. McKinley Ave.



SAFE PLAY

- Areas dedicated to safe play.
- Most play areas for residents only.
- Hang outs for parents in play areas.
- Play areas smaller & distributed.
- Playgrounds highly visible for safety.



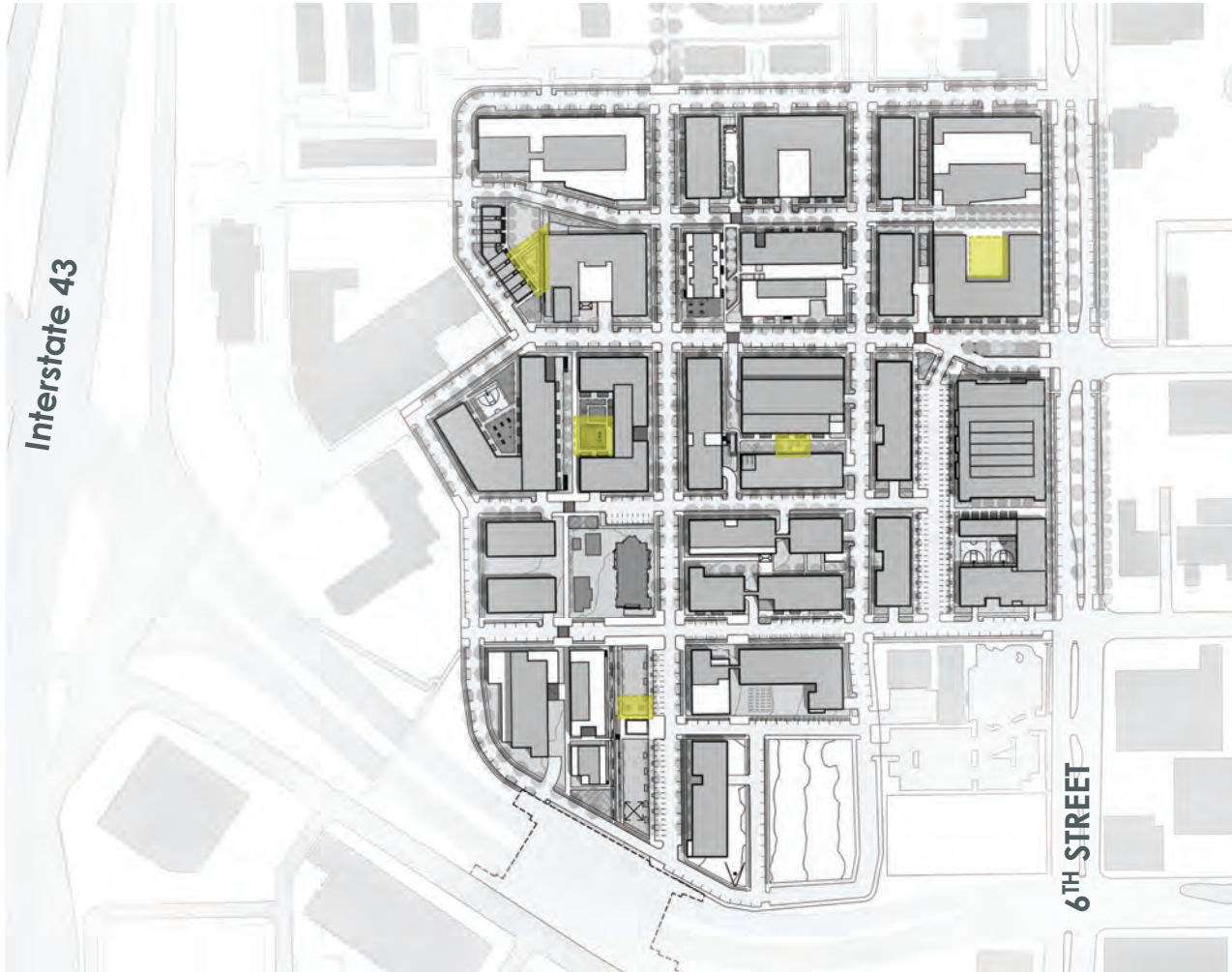
HOA MAI GARDENS – SEATTLE WASHINGTON



THE ROSE – MINNEAPOLIS MINNESOTA



KEY
■ PLAYGROUNDS

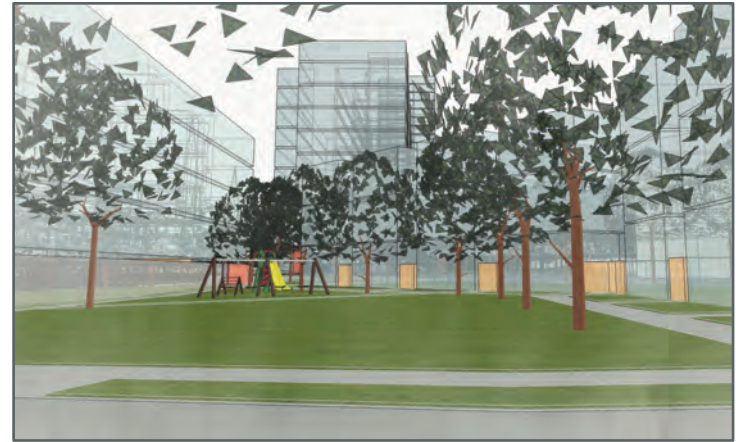
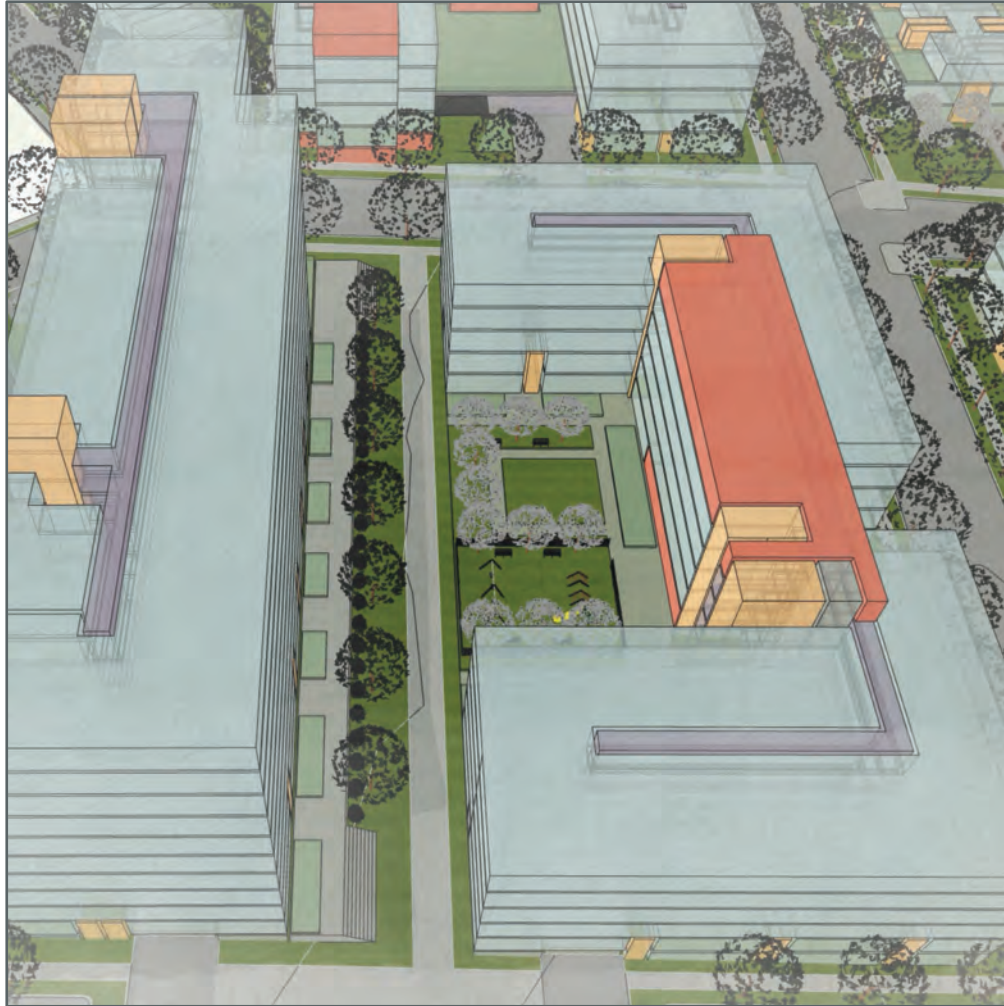


..... W. Galena Street

..... W. Cherry Street

..... W. Vliet Street

..... W. McKinley Ave.



OUTDOOR SPORTS

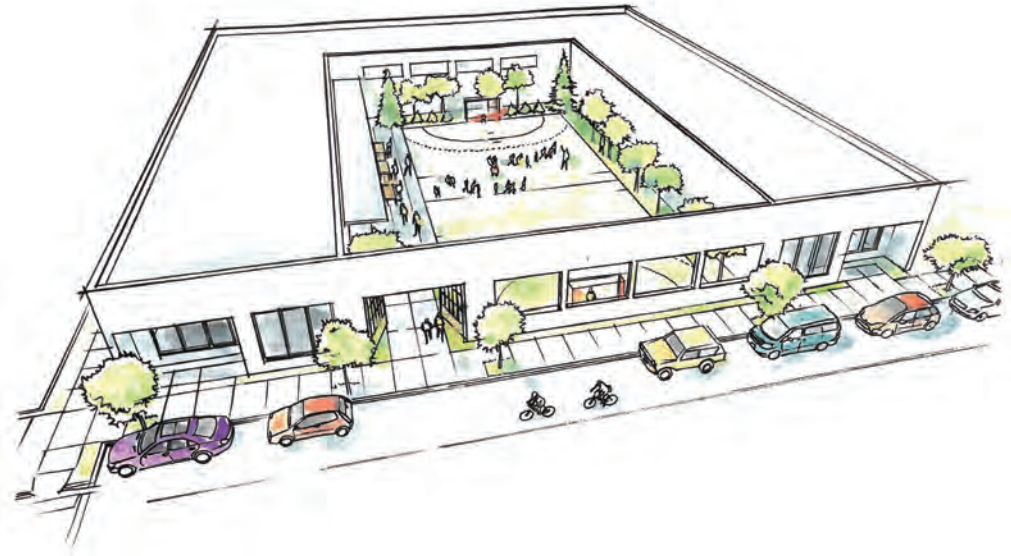
- Sports area needs controlled access.
- Locate along main street & visible routes to discourage unwanted activity.
- Hang out areas for parents.

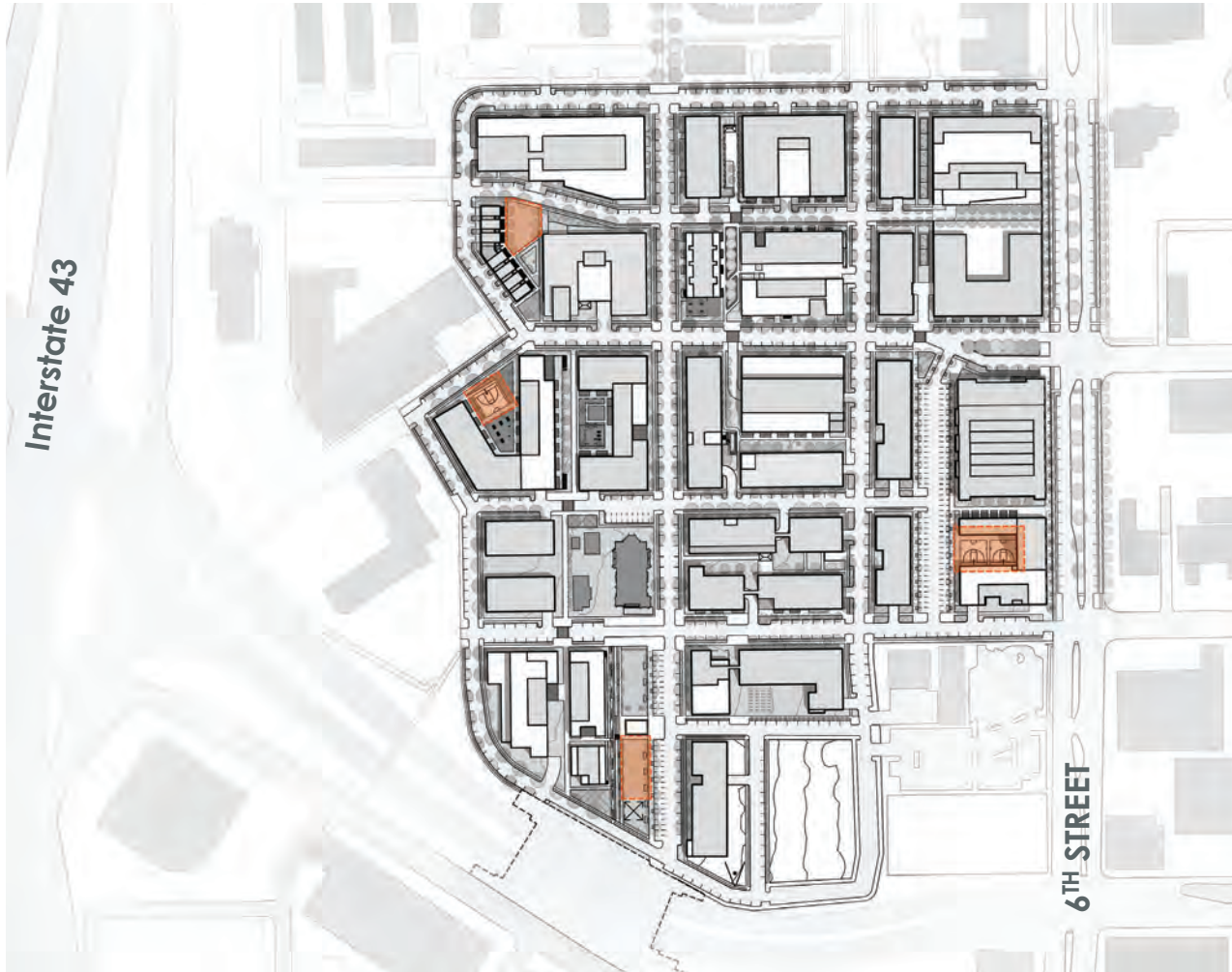


WESTLAWN - MILWAUKEE WASHINGTON



YESLER TERRACE - SEATTLE WASHINGTON





..... W. Galena Street

..... W. Cherry Street

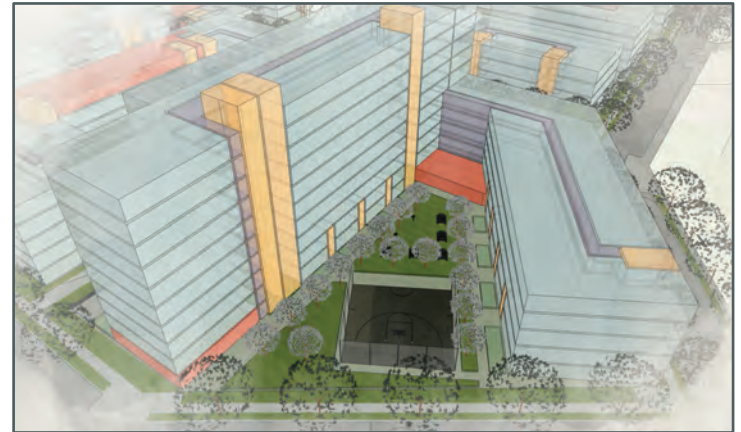
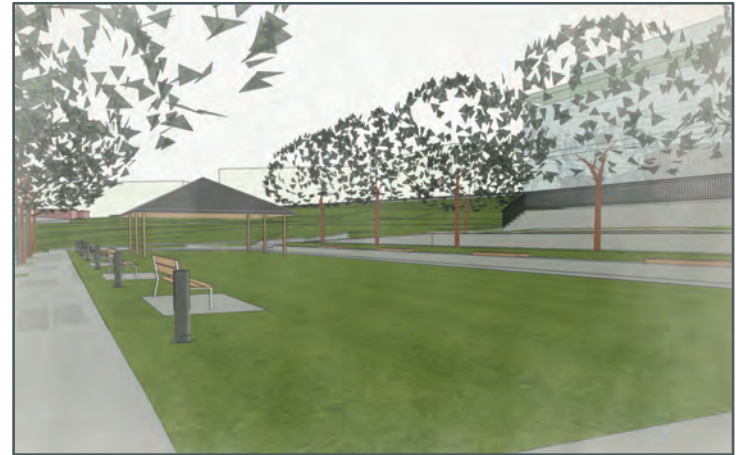
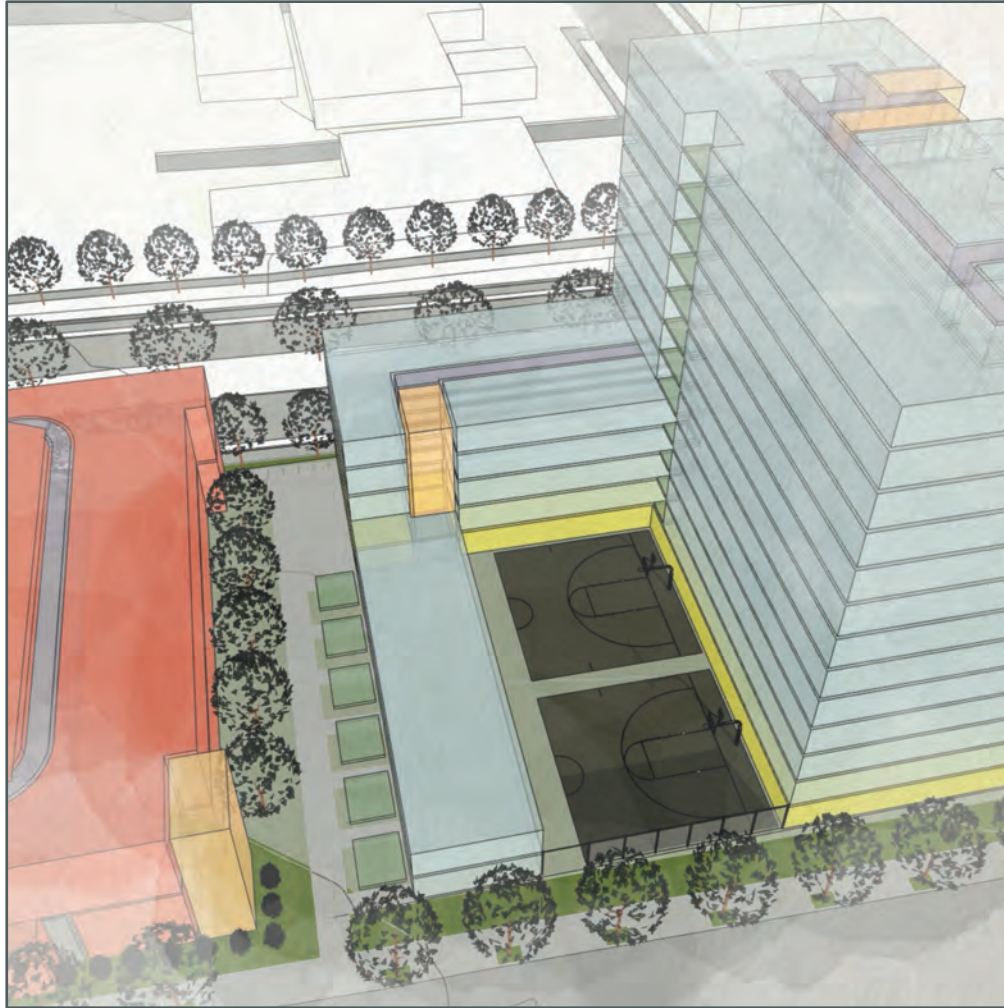
..... W. Vliet Street

..... W. McKinley Ave.

KEY

■ OUTDOOR SPORTS AREAS





ENJOYABLE WAITING

- Bus shelters on each side of 6th St.
- Bollards to protect from traffic.
- Create van service / taxi shelters.
- Benches for seated waiting.
- Views down street to identify buses.
- Unique identification at waiting areas.

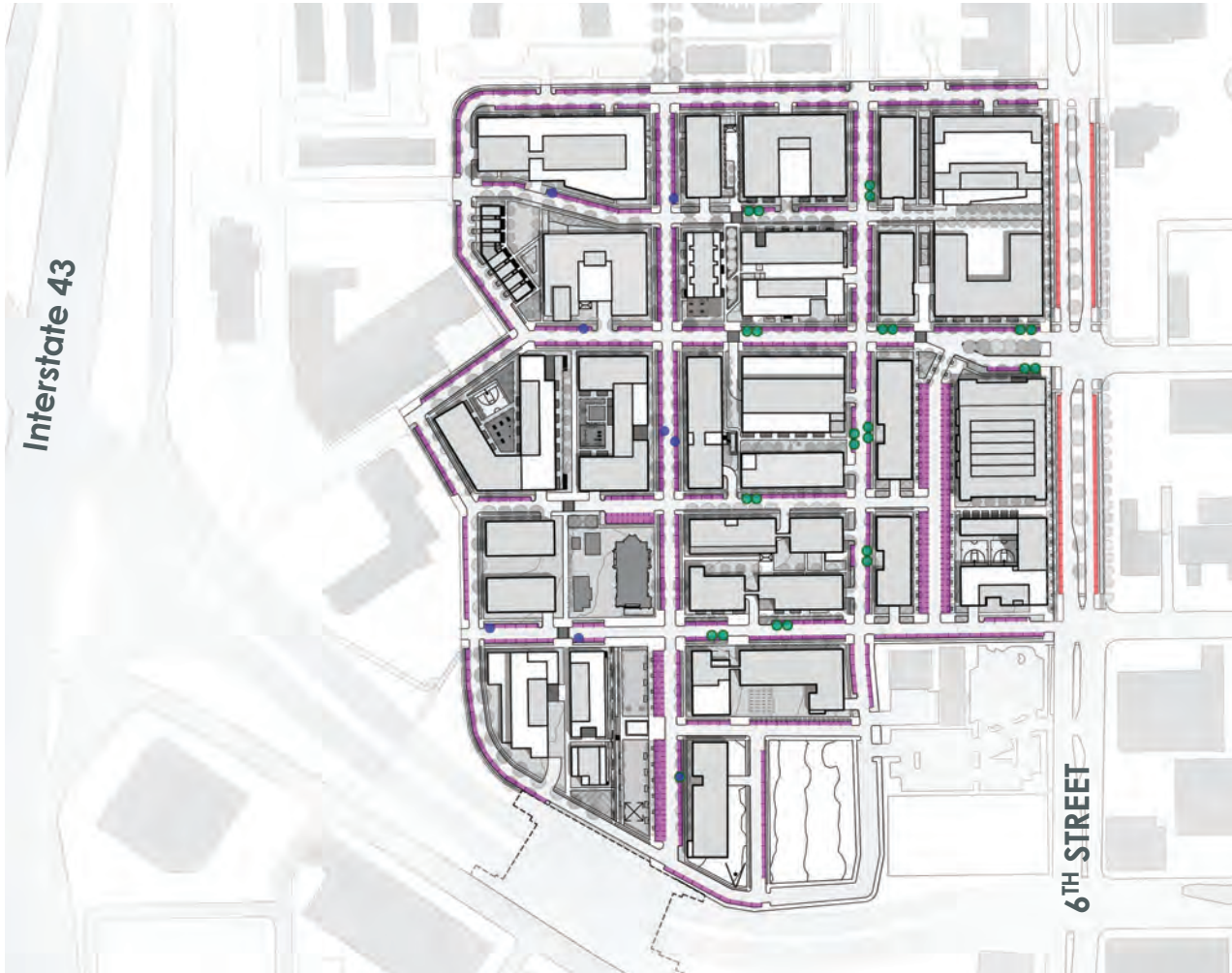


BAYVIEW – MILWAUKEE WISCONSIN



WESTLAWN – MILWAUKEE WISCONSIN





KEY

- SINGLE STALL PICKUP
- DOUBLE STALL PICKUP
- HILLSIDE STREET PARKING
- 6TH STREET PARKING



..... W. Galena Street

..... W. Cherry Street

..... W. Vliet Street

..... W. McKinley Ave.

SAFE CROSSING

- Consider stoplight at Cherry & 6th St.
- Provide bump outs to reduce width.
- Create “landing pads” in the median.
- Provide curb ramps at corners.
- Create a protected bike lane.
- Use trees and lighting as shields.



YESLER TERRACE – SEATTLE WASHINGTON

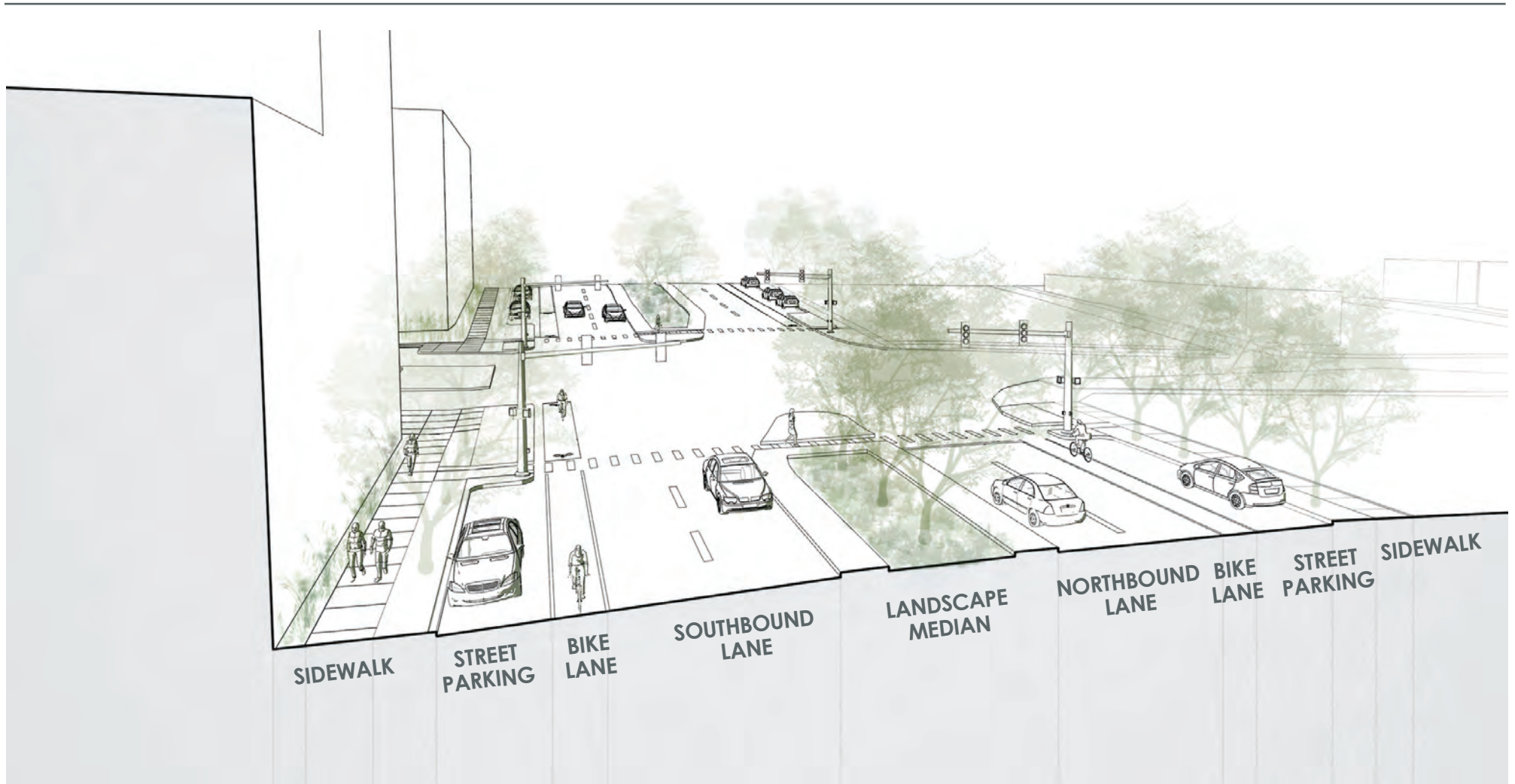


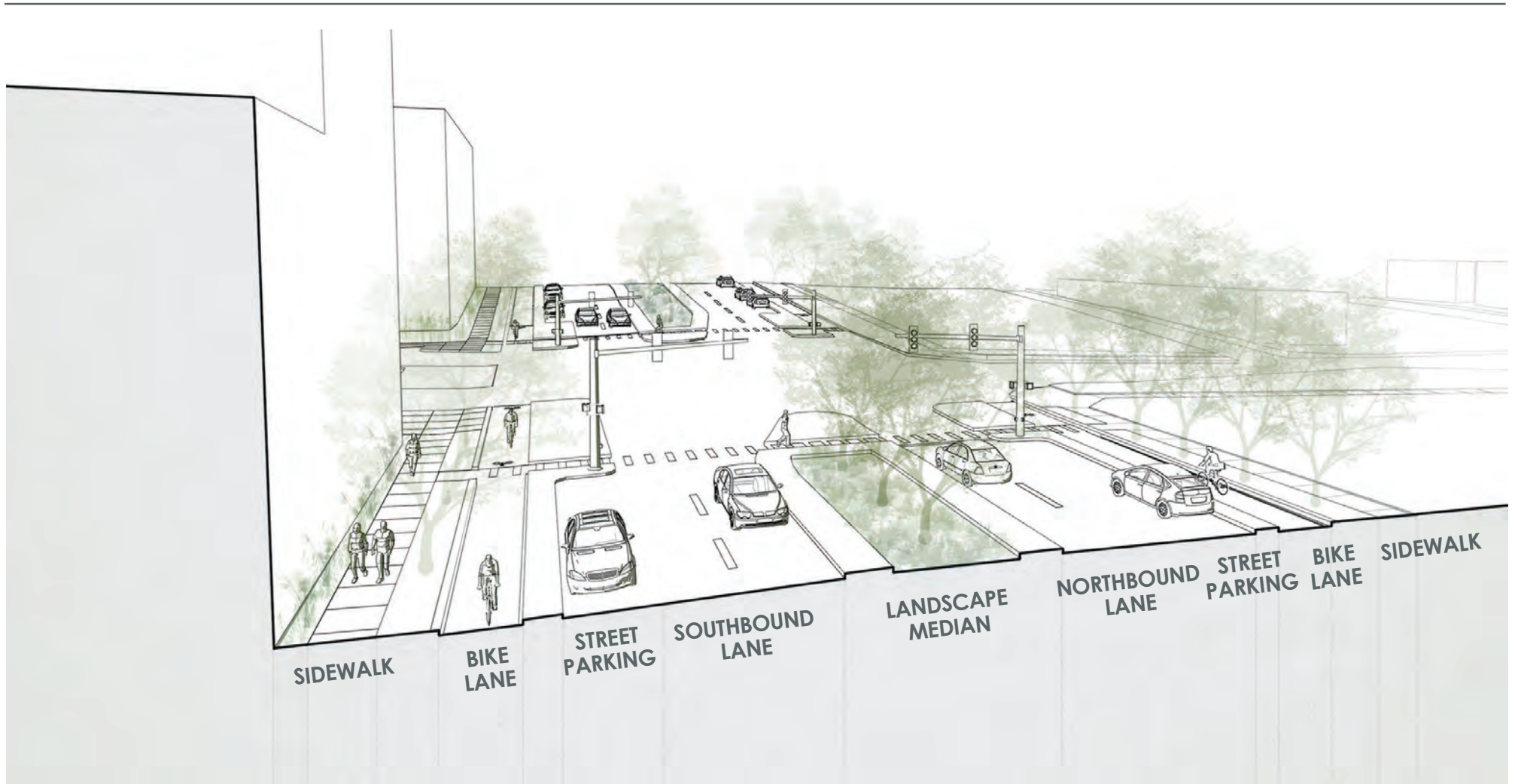
ATLANTA GEORGIA





ATHENA COMMUNICATIONS ■ CE PLANNING STUDIO ■ HOUSING AUTHORITY OF THE CITY OF MILWAUKEE ■ GALBRAITH CARNAHAN ARCHITECTS





SIDEWALK

BIKE
LANE

STREET
PARKING

SOUTHBOUND
LANE

LANDSCAPE
MEDIAN

NORTHBOUND
LANE

STREET
PARKING

BIKE
LANE

SIDEWALK

BUILDING ENTRY

- Layers of security at entrances.
- Shared entrances for those who enjoy socializing.
- Secure package delivery.
- A “front porch”.
- When possible, provide individual entrances.

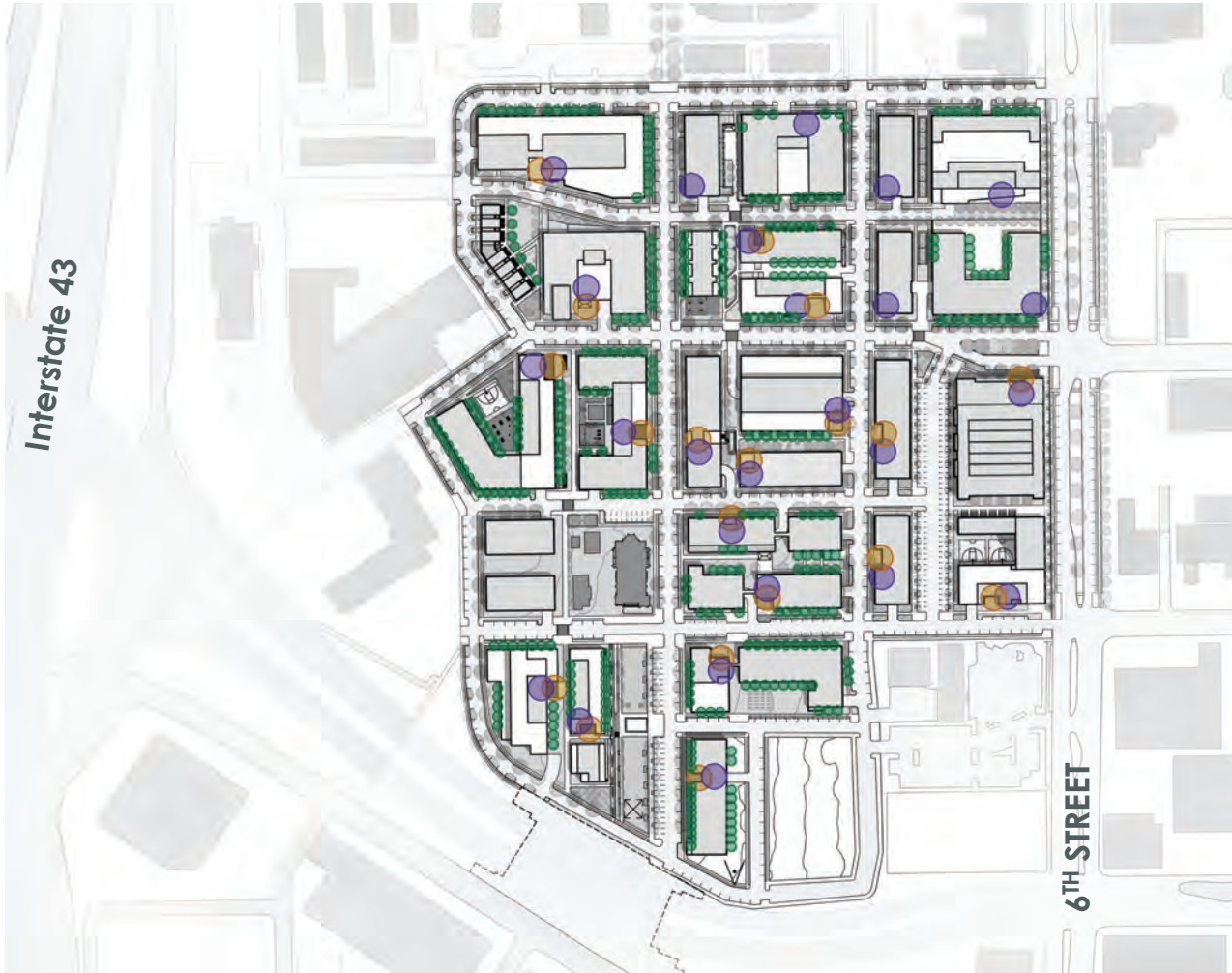


RED CEDAR – SEATTLE WASHINGTON



RAVEN TERRACE – SEATTLE WASHINGTON





KEY

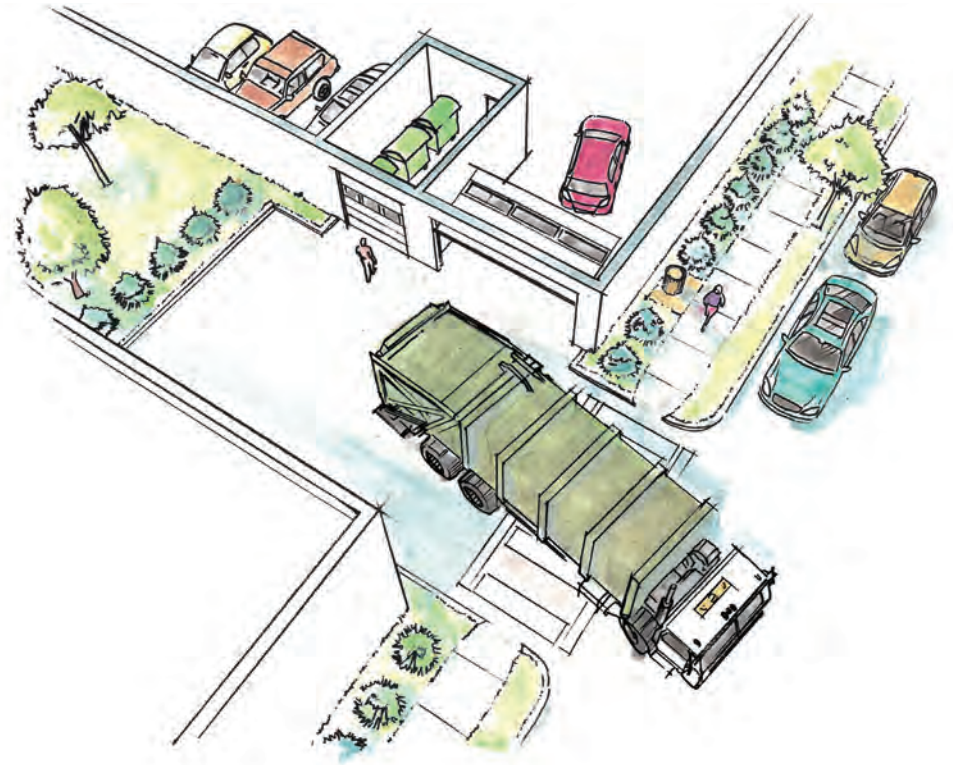
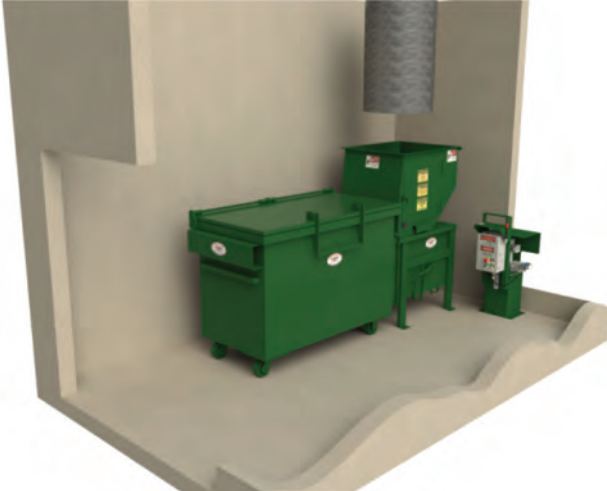
- SHARED ENTRY
- ENTRY GARDENS
- PRIVATE ENTRY

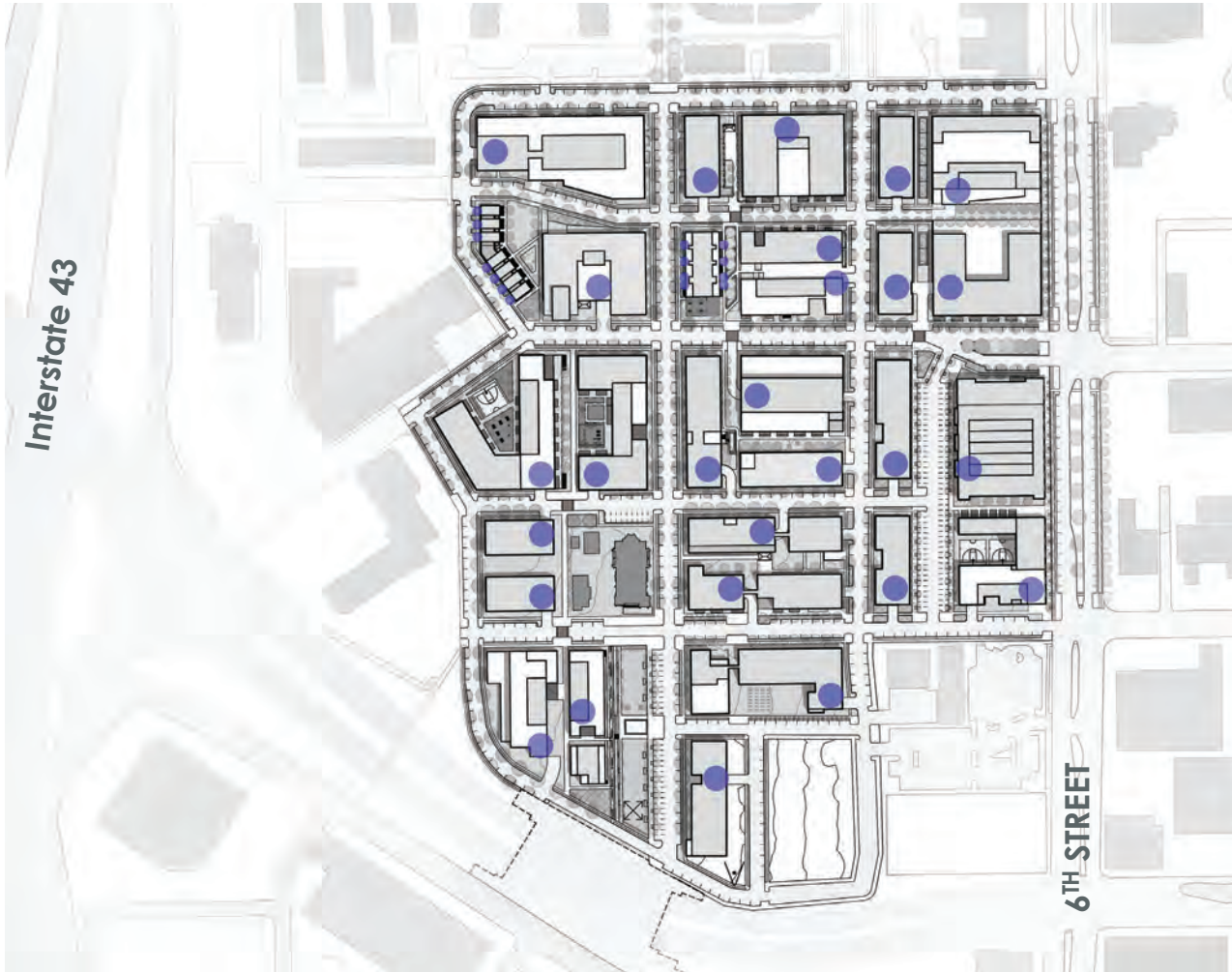




PROTECTED TRASH

- Trash enclosed to keep animals out.
- Trash cans throughout Hillside for litter collection.
- Larger dumpsters to streamline collection.





..... W. Galena Street

..... W. Cherry Street

..... W. Vliet Street

..... W. McKinley Ave.

KEY

● INDOOR TRASH ROOMS



ROOFTOP SPACES

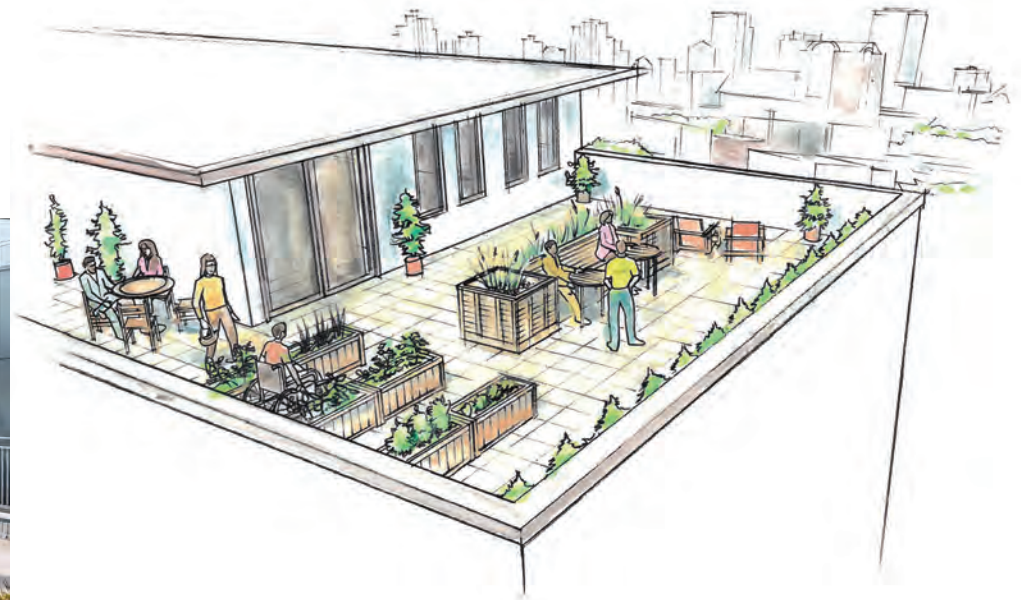
- Quiet places on the roof.
- Rooftop space allows views out over the neighborhood.
- Access for residents only.
- Shelter from wind is important.



BREESE – MADISON WISCONSIN



BRONX AFFORDABLE HOUSING – NEW YORK





KEY

- ROOF TOP ROOM
- ROOF TERRACE
- GREEN ROOF

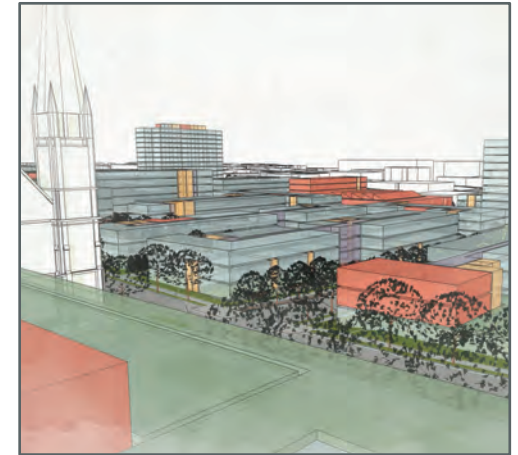
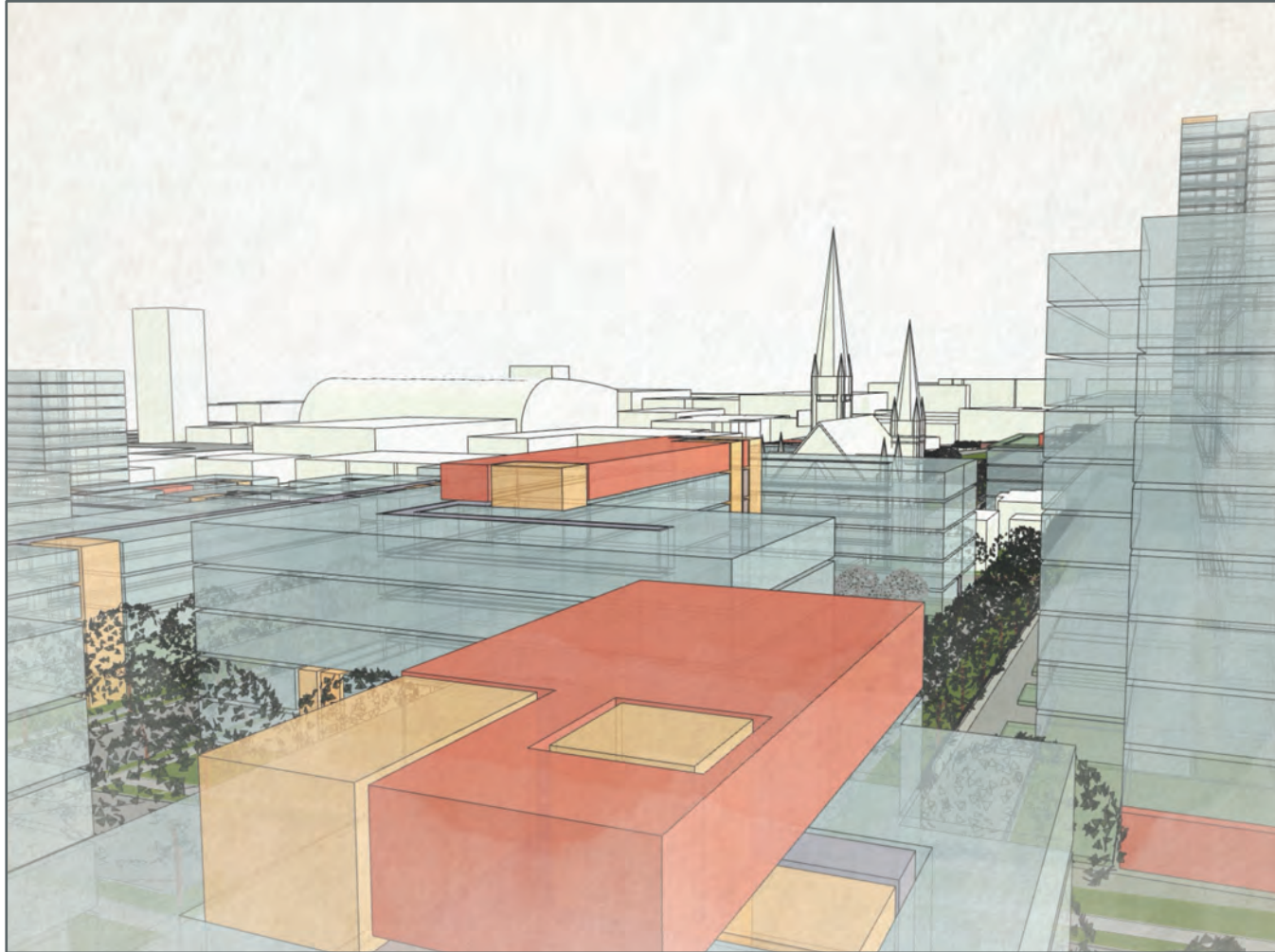


..... W. Galena Street

..... W. Cherry Street

..... W. Vliet Street

..... W. McKinley Ave.



INDOOR GATHERING

- Formal “reservation only” spaces are desired.
- Informal “drop in” spaces are wanted.
- Food prep a key part of one space in each building.
- Windows for light & safety.

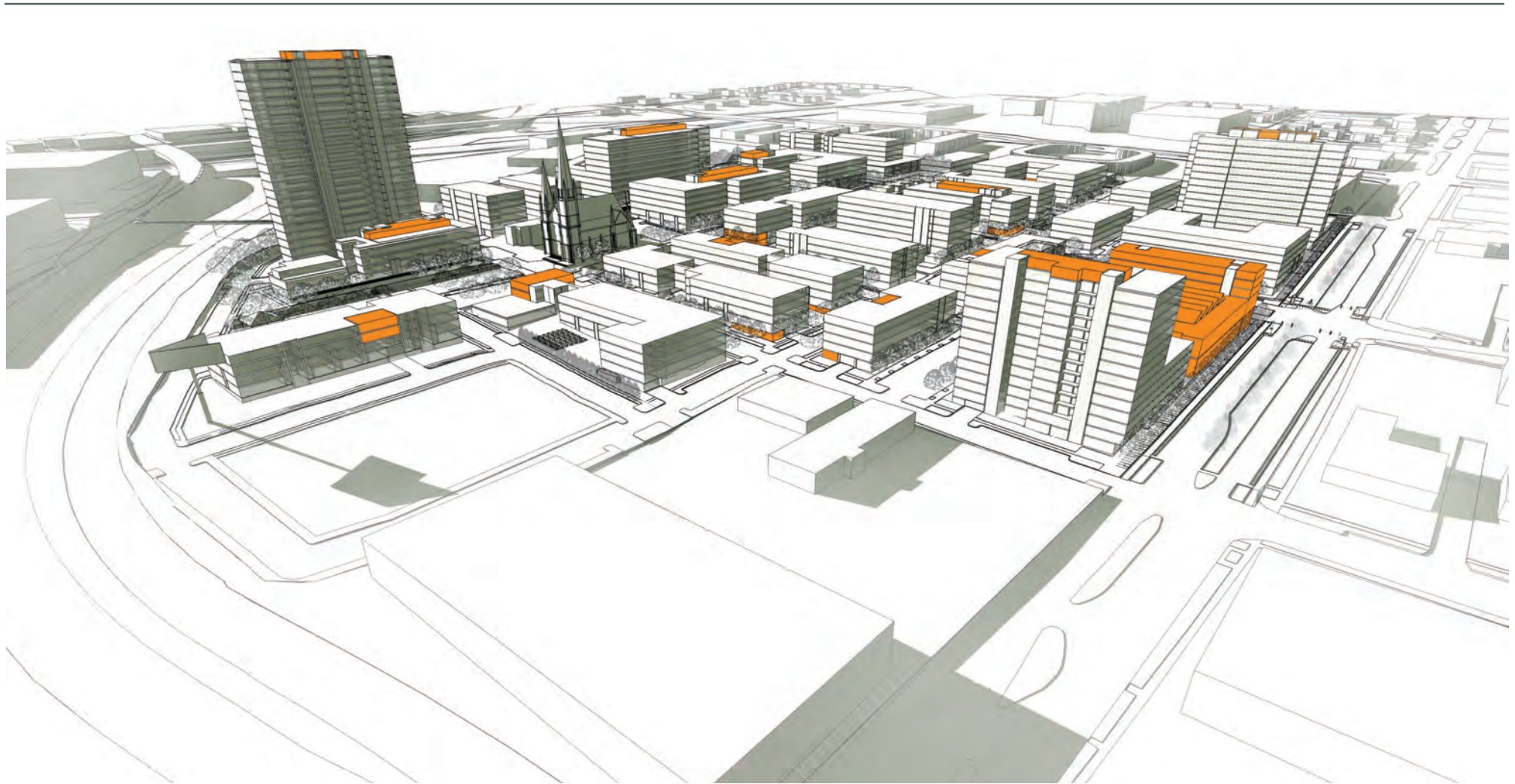


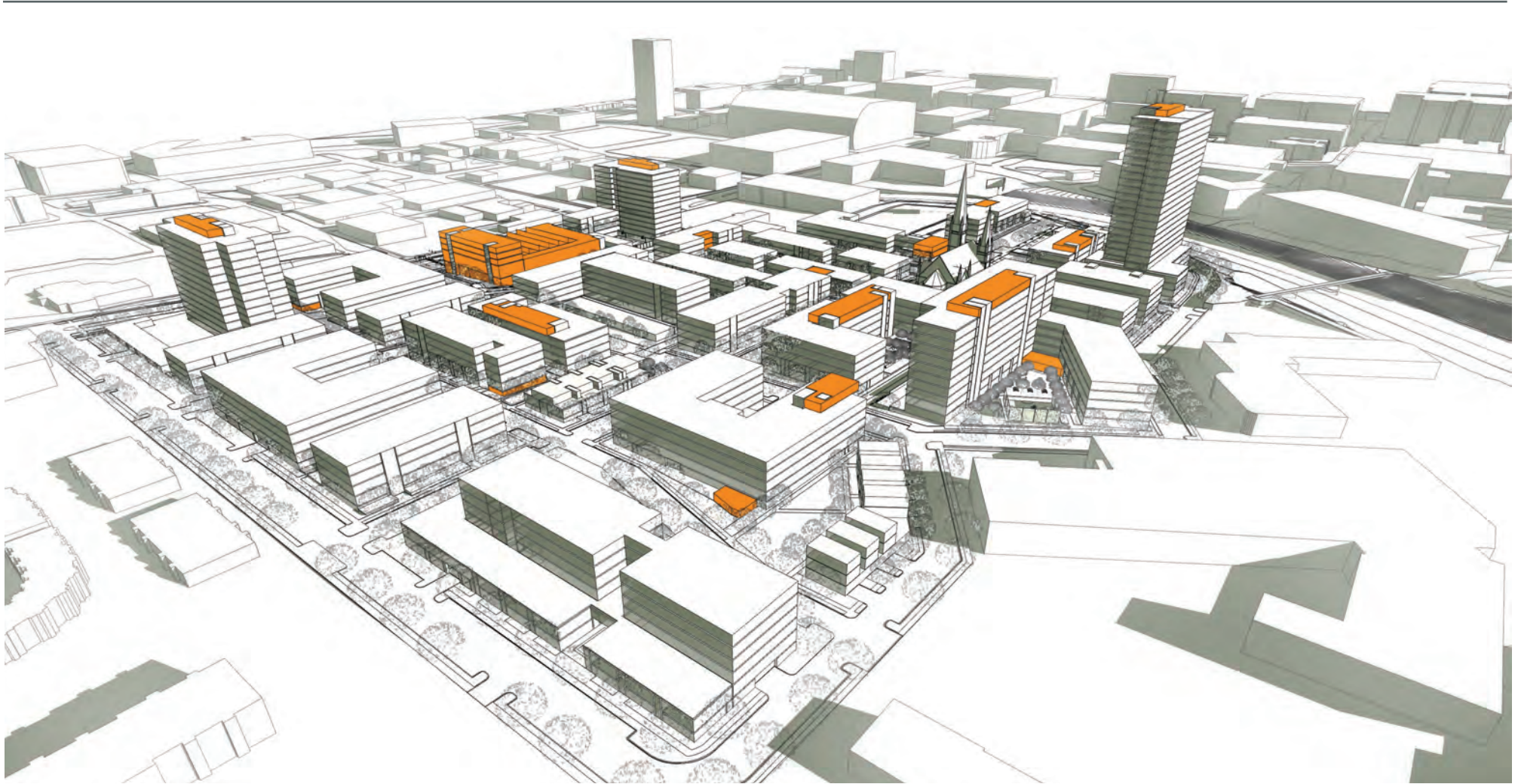
TERRACE 459 – CHICAGO ILLINOIS



THE LINDLEY – CHEVY CHASE MD







ATHENA COMMUNICATIONS ■ CE PLANNING STUDIO ■ HOUSING AUTHORITY OF THE CITY OF MILWAUKEE ■ GALBRAITH CARNAHAN ARCHITECTS

- 2,389 UNITS
- 343 PRIVATE ENTRANCES
- 1,930 COVERED PARKING SPACES
- 20+ PUBLIC SPACES



..... W. Galena Street

..... W. Cherry Street

..... W. Vliet Street

..... W. McKinley Ave.



PHASES

PHASE ONE

511 UNITS
78 PRIVATE ENTRIES
356 PARKING SPACES

PHASE TWO

465 UNITS
34 PRIVATE ENTRIES
430 PARKING SPACES

PHASE THREE

521 UNITS
101 PRIVATE ENTRIES
461 PARKING SPACES

PHASE FOUR

481 UNITS
81 PRIVATE ENTRIES
382 PARKING SPACES

PHASE FIVE

411 UNITS
49 PRIVATE ENTRIES
301 PARKING SPACES



..... W. Galena Street

..... W. Cherry Street

..... W. Vliet Street

..... W. McKinley Ave.



EXISTING HILLSIDE

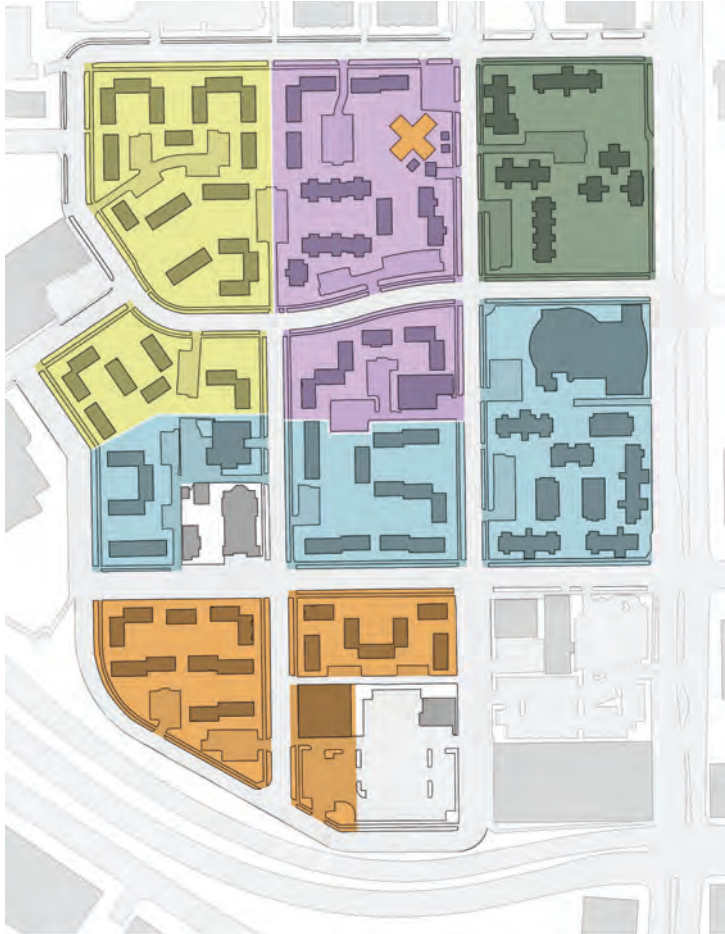
PHASE ONE
72 UNITS
49 HIGH RISE UNITS
121 TOTAL UNITS

PHASE TWO
129 UNITS
MAINTENANCE BLDG.
RESOURCE CENTER

PHASE THREE
90 UNITS

PHASE FOUR
70 UNITS
MILWAUKEE
COMMUNITY
SERVICE CORPS.

PHASE FIVE
60 UNITS



PROPOSED HILLSIDE

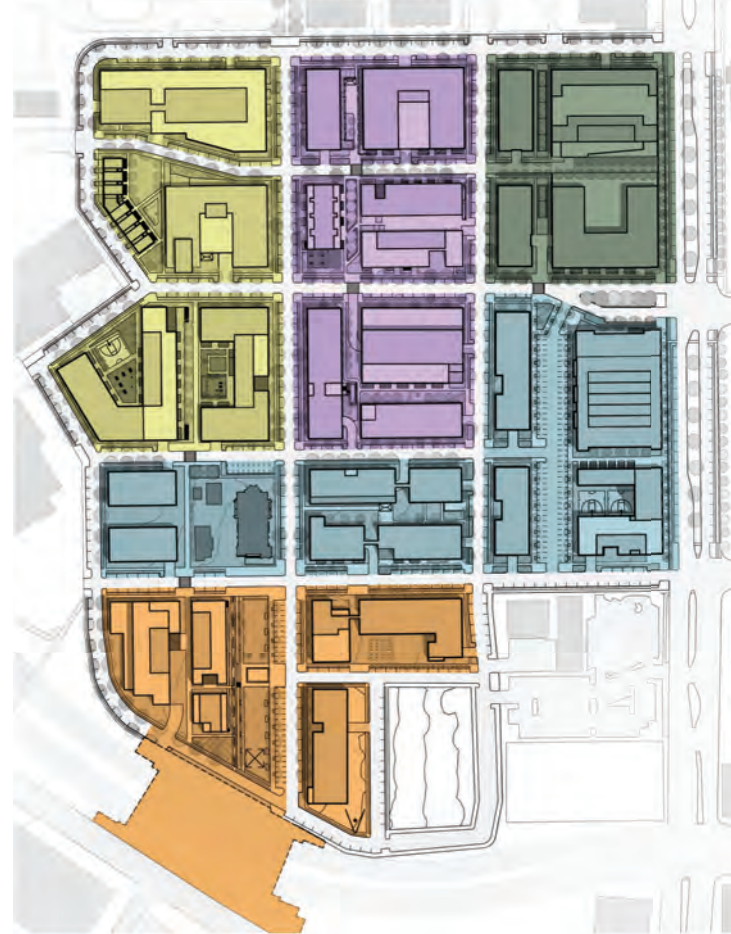
PHASE ONE
511 UNITS
78 PRIVATE ENTRIES
356 PARKING SPACES

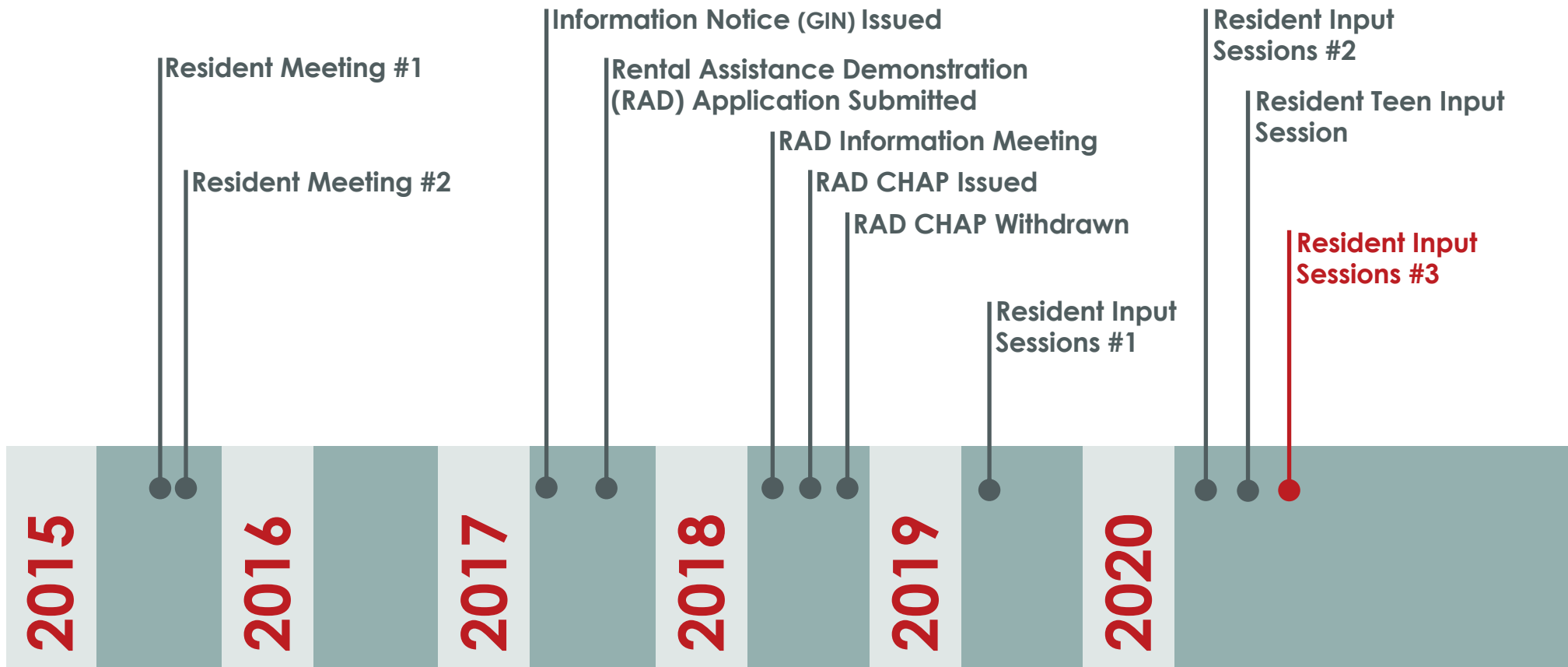
PHASE TWO
465 UNITS
34 PRIVATE ENTRIES
430 PARKING SPACES

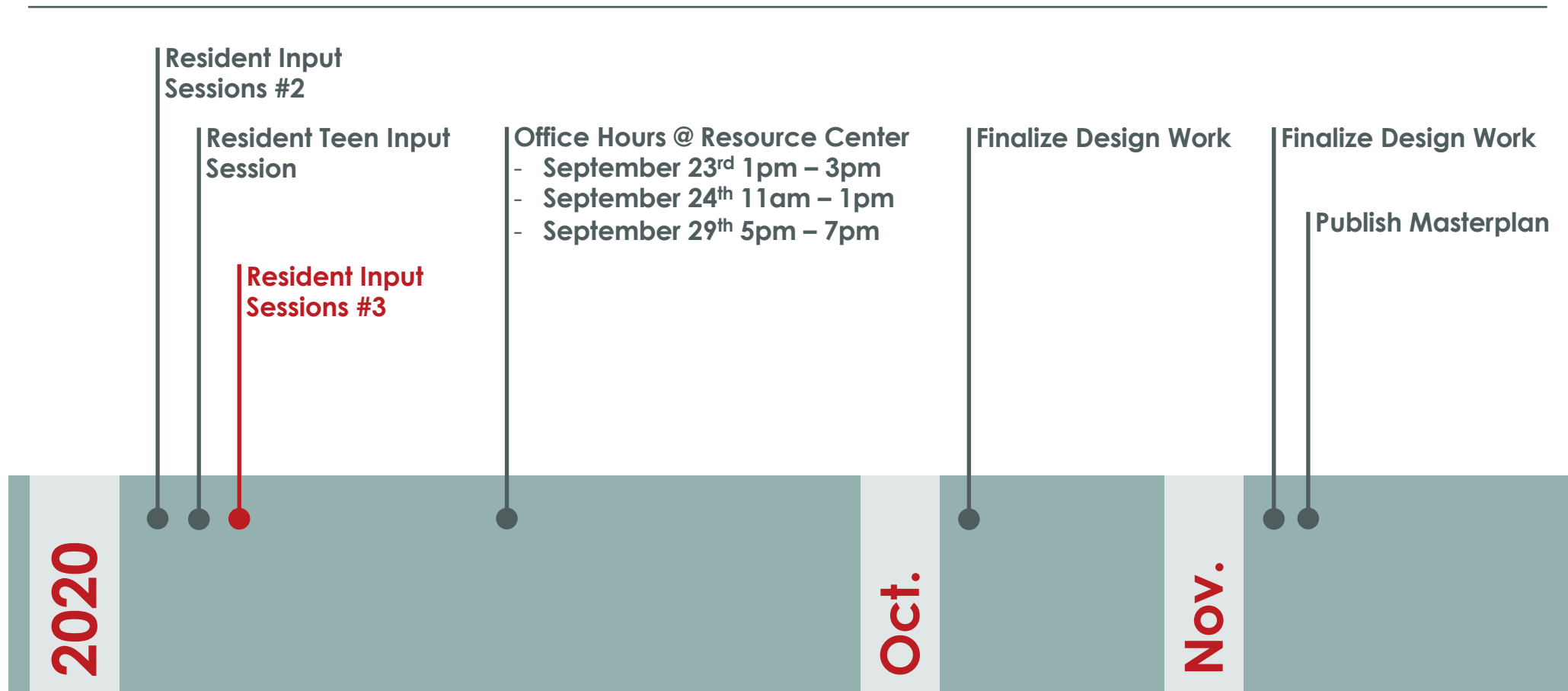
PHASE THREE
521 UNITS
101 PRIVATE ENTRIES
461 PARKING SPACES

PHASE FOUR
481 UNITS
81 PRIVATE ENTRIES
382 PARKING SPACES

PHASE FIVE
411 UNITS
49 PRIVATE ENTRIES
301 PARKING SPACES







STAY INFORMED. STAY INVOLVED.

EMAIL: HillsideVision@hacm.org

TEXT: HillsideVision@hacm.org

PHONE: 1(414)-286-5850

WEBSITE: [https://www.hacm.org/about-us/hillside-vision.](https://www.hacm.org/about-us/hillside-vision)